

**PRODUCT INFORMATION**

<b>Target</b>	CDH1
<b>Synonyms</b>	Arc-1;BCDS1;CD324;CDHE;ECAD;LCAM;UVO
<b>Description</b>	Recombinant Human CDH1 with C-terminal human Fc tag
<b>Delivery</b>	In Stock
<b>Uniprot ID</b>	P12830
<b>Expression Host</b>	HEK293
<b>Tag</b>	C-Human Fc Tag
<b>Molecular Characterization</b>	CDH1(Gln23-Gln706) hFc(Glu99-Ala330)
<b>Molecular Weight</b>	The protein has a predicted molecular mass of 101.6 kDa after removal of the signal peptide. The apparent molecular mass of CDH1-hFc is approximately 100-130 kDa due to glycosylation.
<b>Purity</b>	The purity of the protein is greater than 95% as determined by SDS-PAGE and Coomassie blue staining.
<b>Formulation &amp; Reconstitution</b>	Lyophilized from sterile PBS, pH 7.4. Normally 5% - 8% trehalose is added as protectants before lyophilization. Please see Certificate of Analysis for specific instructions of reconstitution.
<b>Storage &amp; Shipping</b>	Store at -20°C to -80°C for 12 months in lyophilized form. After reconstitution, if not intended for use within a month, aliquot and store at -80°C (Avoid repeated freezing and thawing). Lyophilized proteins are shipped at ambient temperature.
<b>Background</b>	This gene encodes a classical cadherin of the cadherin superfamily. Alternative splicing results in multiple transcript variants, at least one of which encodes a preproprotein that is proteolytically processed to generate the mature glycoprotein. This calcium-dependent cell-cell adhesion protein is comprised of five extracellular cadherin repeats, a transmembrane region and a highly conserved cytoplasmic tail. Mutations in this gene are correlated with gastric, breast, colorectal, thyroid and ovarian cancer. Loss of function of this gene is thought to contribute to cancer progression by increasing proliferation, invasion, and/or metastasis. The ectodomain of this protein mediates bacterial adhesion to mammalian cells and the cytoplasmic domain is required for internalization. This gene is present in a gene cluster with other members of the cadherin family on chromosome 16. [provided by RefSeq, Nov 2015]
<b>Usage</b>	Research use only
<b>Conjugate</b>	Unconjugated



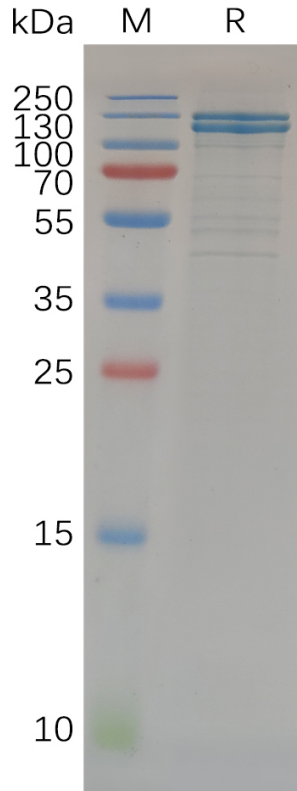


Figure 1. Human CDH1 Protein, hFc Tag on SDS-PAGE under reducing condition.

### Human CDH1,hFc Tagged protein ELISA

0.2  $\mu$ g of Human CDH1, hFc tagged protein per well

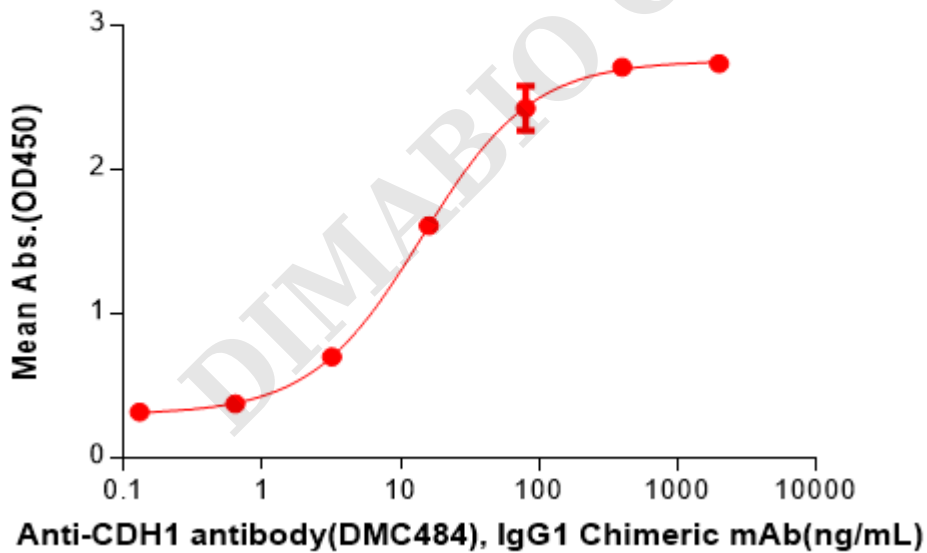


Figure 2. ELISA plate pre-coated by 2  $\mu$ g/mL (100  $\mu$ L/well) Human CDH1 Protein, hFc Tag(PME100674) can bind Anti-CDH1 antibody(DMC484), IgG1 Chimeric mAb in a linear range of 0.64-16 ng/mL.

