

PRODUCT INFORMATION

Target	CDH17
Synonyms	CDH16;HPT-1;HPT1
Description	Recombinant human CDH17 protein with C-terminal 6×His tag
Delivery	In Stock
Uniprot ID	Q12864
Expression Host	HEK293
Tag	C-6×His Tag
Molecular Characterization	CDH17(Gln23-Met787) 6×His tag
Molecular Weight	The protein has a predicted molecular mass of 85.7 kDa after removal of the signal peptide. The apparent molecular mass of CDH17-His is approximately 100-130 kDa due to glycosylation.
Purity	The purity of the protein is greater than 85% as determined by SDS-PAGE and Coomassie blue staining.
Formulation & Reconstitution	Lyophilized from sterile PBS, pH 7.4. Normally 5 % - 8% trehalose is added as protectants before lyophilization. Please see Certificate of Analysis for specific instructions of reconstitution.
Storage & Shipping	Store at -20°C to -80°C for 12 months in lyophilized form. After reconstitution, if not intended for use within a month, aliquot and store at -80°C (Avoid repeated freezing and thawing). Lyophilized proteins are shipped at ambient temperature.
Background	This gene is a member of the cadherin superfamily, genes encoding calcium-dependent, membrane-associated glycoproteins. The encoded protein is cadherin-like, consisting of an extracellular region, containing 7 cadherin domains, and a transmembrane region but lacking the conserved cytoplasmic domain. The protein is a component of the gastrointestinal tract and pancreatic ducts, acting as an intestinal proton-dependent peptide transporter in the first step in oral absorption of many medically important peptide-based drugs. The protein may also play a role in the morphological organization of liver and intestine. Alternative splicing results in multiple transcript variants. [provided by RefSeq, Jan 2009]
Usage	Research use only
Conjugate	Unconjugated



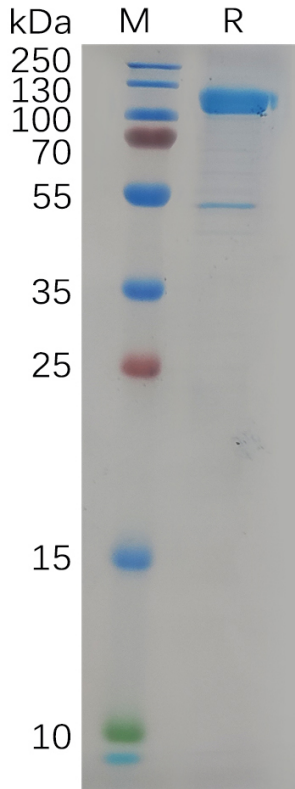


Figure 1. Human CDH17 Protein, His Tag on SDS-PAGE under reducing condition.

Human CDH17, His Tagged protein ELISA

0.2 µg of Human CDH17, His tagged protein per well

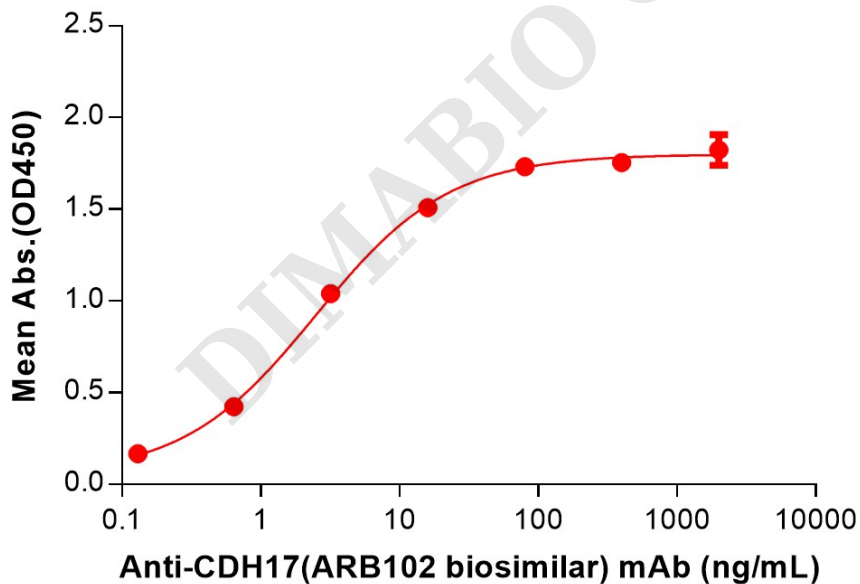


Figure 2. ELISA plate pre-coated by 2 µg/mL (100 µL/well) Human CDH17 Protein, His Tag (PME100801) can bind Anti-CDH17(ARB102 biosimilar) mAb (BME100198) in a linear range of 0.64-16 ng/mL.



Human CDH17, His Tagged protein ELISA

0.2 μg of Human CDH17, His tagged protein per well

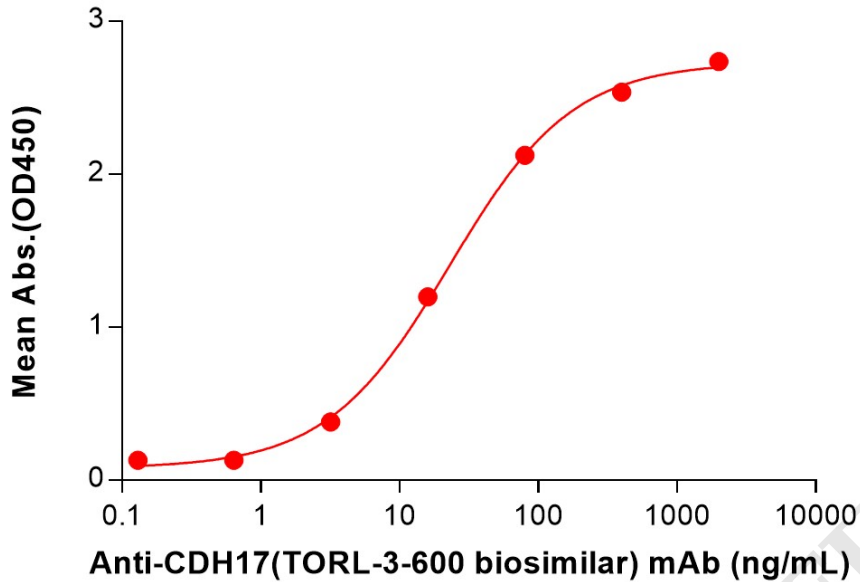


Figure 3. ELISA plate pre-coated by 2 $\mu\text{g}/\text{mL}$ (100 $\mu\text{L}/\text{well}$) Human CDH17 Protein, His Tag (PME100801) can bind Anti-CDH17(TORL-3-600 biosimilar) mAb (BME100233) in a linear range of 3.20-400 ng/mL.

Human CDH17, His Tagged protein ELISA

0.2 μg of Human CDH17, His tagged protein per well

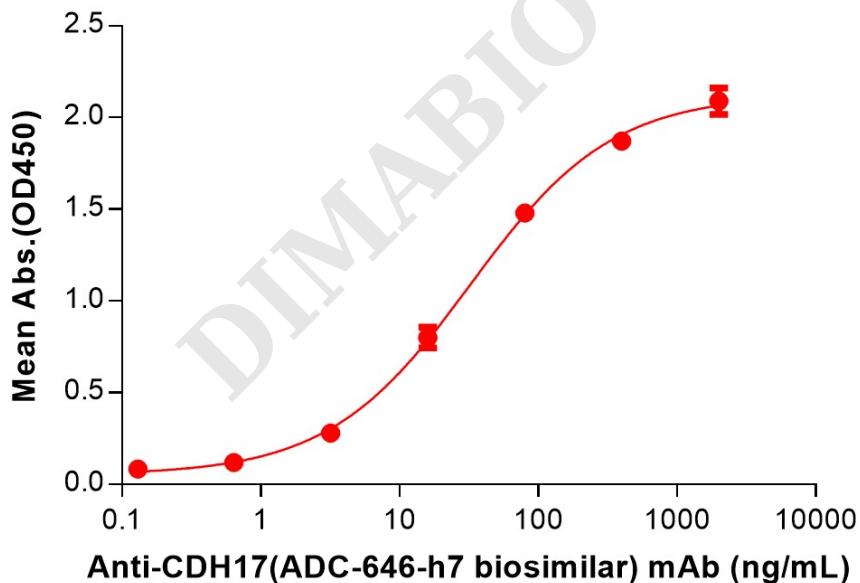


Figure 4. ELISA plate pre-coated by 2 $\mu\text{g}/\text{mL}$ (100 $\mu\text{L}/\text{well}$) Human CDH17 Protein, His Tag (PME100801) can bind Anti-CDH17(ADC-646-h7 biosimilar) mAb (BME100262) in a linear range of 3.20-400 ng/mL.

