

PRODUCT INFORMATION

Target	CFD
Synonyms	DF; ADN; PFD; ADIPSIN
Description	Recombinant human CFD Protein with C-terminal 10×His tag
Delivery	In Stock
Uniprot ID	P00746
Expression Host	HEK293
Tag	C-10×His tag
Molecular Characterization	CFD(Ile26-Ala253) 10×His tag
Molecular Weight	The protein has a predicted molecular mass of 25.8 kDa after removal of the signal peptide. The apparent molecular mass of CFD-His is approximately 25-35 kDa due to glycosylation.
Purity	The purity of the protein is greater than 85% as determined by SDS-PAGE and Coomassie blue staining.
Formulation & Reconstitution	Lyophilized from sterile PBS, pH 7.4. Normally 5% - 8% trehalose is added as protectants before lyophilization. Please see Certificate of Analysis for specific instructions of reconstitution.
Storage & Shipping	Store at -20°C to -80°C for 12 months in lyophilized form. After reconstitution, if not intended for use within a month, aliquot and store at -80°C (Avoid repeated freezing and thawing). Lyophilized proteins are shipped at ambient temperature.
Background	This gene encodes a member of the S1, or chymotrypsin, family of serine peptidases. This protease catalyzes the cleavage of factor B, the rate-limiting step of the alternative pathway of complement activation. This protein also functions as an adipokine, a cell signaling protein secreted by adipocytes, which regulates insulin secretion in mice. Mutations in this gene underlie complement factor D deficiency, which is associated with recurrent bacterial meningitis infections in human patients. Alternative splicing of this gene results in multiple transcript variants. At least one of these variants encodes a preproprotein that is proteolytically processed to generate the mature protease. [provided by RefSeq, Nov 2015]
Usage	Research use only
Conjugate	Unconjugated



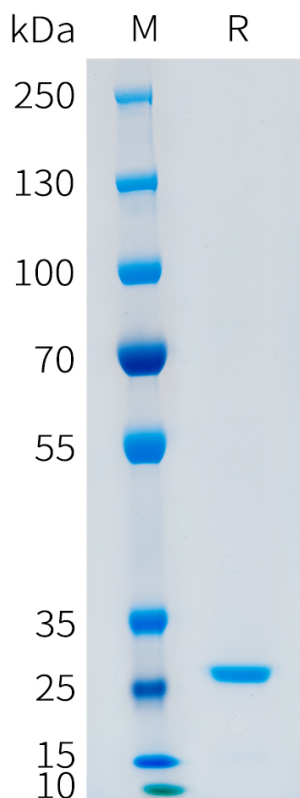


Figure 1. Human CFD Protein, His Tag on SDS-PAGE under reducing condition.

DIMABIO CONFIDENTIAL

