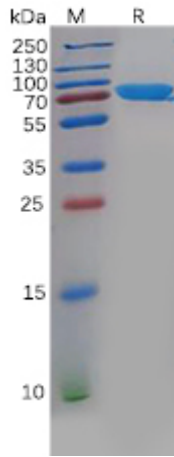


**PRODUCT INFORMATION**

<b>Target</b>	CHODL
<b>Synonyms</b>	C21orf68;MT75;PRED12
<b>Description</b>	Recombinant Human CHODL with C-terminal human Fc tag
<b>Delivery</b>	In Stock
<b>Uniprot ID</b>	Q9H9P2
<b>Expression Host</b>	HEK293
<b>Tag</b>	C-Human Fc Tag
<b>Molecular Characterization</b>	CHODL(Arg22-Asn216) hFc(Glu99-Ala330)
<b>Molecular Weight</b>	The protein has a predicted molecular mass of 48.1 kDa after removal of the signal peptide. The apparent molecular mass of CHODL-hFc is approximately 70-100 kDa due to glycosylation.
<b>Purity</b>	The purity of the protein is greater than 95% as determined by SDS-PAGE and Coomassie blue staining.
<b>Formulation &amp; Reconstitution</b>	Lyophilized from sterile PBS, pH 7.4. Normally 5% - 8% trehalose is added as protectants before lyophilization. Please see Certificate of Analysis for specific instructions of reconstitution.
<b>Storage &amp; Shipping</b>	Store at -20°C to -80°C for 12 months in lyophilized form. After reconstitution, if not intended for use within a month, aliquot and store at -80°C (Avoid repeated freezing and thawing). Lyophilized proteins are shipped at ambient temperature.
<b>Background</b>	This gene encodes a type I membrane protein with a carbohydrate recognition domain characteristic of C-type lectins in its extracellular portion. In other proteins, this domain is involved in endocytosis of glycoproteins and exogenous sugar-bearing pathogens. This protein localizes predominantly to the perinuclear region. Several transcript variants encoding a few different isoforms have been found for this gene. [provided by RefSeq, Feb 2011]
<b>Usage</b>	Research use only
<b>Conjugate</b>	Unconjugated





**Figure 1.** Human CHODL Protein, hFc Tag on SDS-PAGE under reducing condition.

DIMABIO CONFIDENTIAL

