

PRODUCT INFORMATION

Tag	Warning: Undefined variable \$hasAttributeValueDescription in C:\wwwroot\mirror\dimabio.com\wp-content\plugins\woocommerce-print-products\public\class-woocommerce-print-products-public.php on line 2806 C-Flag&Strep Tag
Target	CLDN18.2
Synonyms	SFTAS; SFTPJ
Description	Human CLDN18.2-Strep full length protein-PeptiNanodisc
Delivery	In Stock
Uniprot ID	P56856-2
Expression Host	HEK293
Protein Families	Transmembrane
Protein Pathways	Cell adhesion molecules (CAMs), Leukocyte transendothelial migration, Tight junction
Molecular Weight	The human full length CLDN18.2-Strep Protein has a MW of 27.5 kDa
Formulation & Reconstitution	Lyophilized from nanodisc solubilization buffer (20 mM Tris-HCl, 150 mM NaCl, pH 8.0). Normally 5% - 8% trehalose is added as protectants before lyophilization. Please see Certificate of Analysis for specific instructions of reconstitution.
Yefei_Storage	Store at -20°C to -80°C for 12 months in lyophilized form. After reconstitution, if not intended for use within a month, aliquot and store at -80°C (Avoid repeated freezing and thawing). Lyophilized proteins are shipped at ambient temperature.
Background	A member of the claudin family, Claudins are integral membrane proteins and components of tight junction strands. Tight junction strands serve as a physical barrier to prevent solutes and water from passing freely through the paracellular space between epithelial or endothelial cell sheets, and also play critical roles in maintaining cell polarity and signal transductions. This gene is upregulated in patients with ulcerative colitis and highly overexpressed in infiltrating ductal adenocarcinomas. PKC/MAPK/Ras-1 (protein kinase C/mitogen-activated protein kinase/activator protein-1) dependent pathway regulates the expression of this gene in gastric cells. Alternatively spliced transcript variants encoding different isoforms have been identified.
Usage	Research use only
Conjugate	Unconjugated

ELISA assay to evaluate CLDN18.2-Strep-PeptiNanodisc 0.2 μ g Human CLDN18.2-Strep-PeptiNanodisc per well

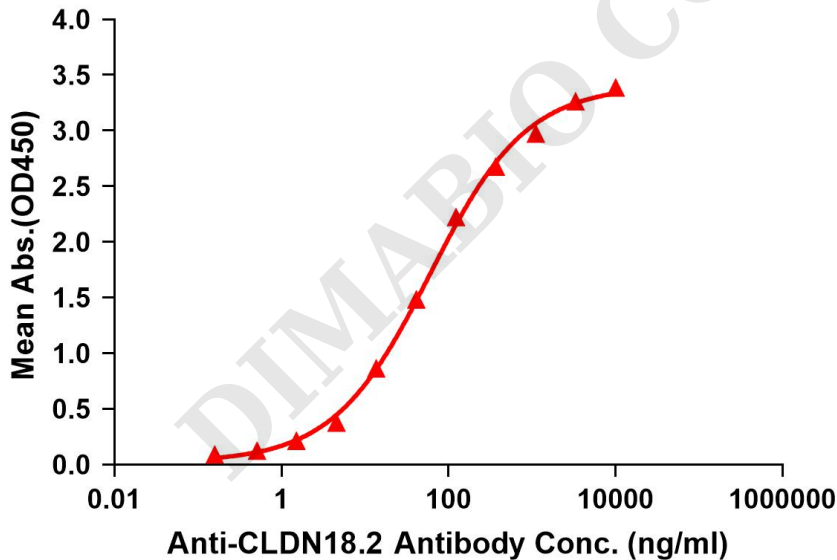


Figure 1. Elisa plates were pre-coated with C-Flag&Strep Tag CLDN18.2-Strep-PeptiNanodisc (0.2 μ g/per well). Serial diluted anti-CLDN18.2 monoclonal antibody (DME100179) solutions were added, washed, and incubated with secondary antibody before Elisa reading. From above data, the EC₅₀ for anti-CLDN18.2 monoclonal antibody binding with CLDN18.2-Strep-PeptiNanodisc is 60.34ng/ml.



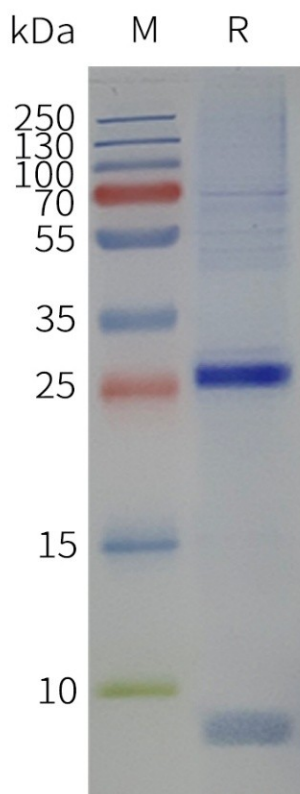


Figure 2. Human CLDN18.2-Strep-PeptiNanodisc, C-Flag&Strep Tag on SDS-PAGE

DIMABIO CONFIDENTIAL

