

PRODUCT INFORMATION

Tag	C-Flag&Strep Tag
Target	CLDN6
Synonyms	Claudin 6, Claudin-6, Skullin, Claudin6
Description	Human CLDN6-Strep full length protein-synthetic nanodisc
Delivery	In Stock
Uniprot ID	P56747
Expression Host	HEK293
Protein Families	Transmembrane
Protein Pathways	Cell adhesion molecules (CAMs), Leukocyte transendothelial migration, Tight junction
Molecular Weight	The human full length CLDN6-Strep Protein has a MW of 23.3 kDa Lyophilized from nanodisc solubilization buffer (20 mM Tris-HCl, 150 mM NaCl, pH 8.0). Normally 5% - 8% trehalose is added as protectants before lyophilization. Please see Certificate of Analysis for specific instructions. Do not use solvents with a pH below 6.5 or those containing high concentrations of divalent metal ions (greater than 5 mM) in subsequent experiments.
Formulation & Reconstitution	Store at -20°C to -80°C for 12 months in lyophilized form. After reconstitution, if not intended for use within a month, aliquot and store at -80°C (Avoid repeated freezing and thawing). Lyophilized proteins are shipped at ambient temperature.
Storage & Shipping	Tight junctions represent one mode of cell-to-cell adhesion in epithelial or endothelial cell sheets, forming continuous seals around cells and serving as a physical barrier to prevent solutes and water from passing freely through the paracellular space. These junctions are comprised of sets of continuous networking strands in the outwardly facing cytoplasmic leaflet, with complementary grooves in the inwardly facing extracytoplasmic leaflet. This gene encodes a component of tight junction strands, which is a member of the claudin family. The protein is an integral membrane protein and is one of the entry cofactors for hepatitis C virus. The gene methylation may be involved in esophageal tumorigenesis. This gene is adjacent to another family member CLDN9 on chromosome 16.
Background	
Usage	Research use only
Conjugate	Unconjugated



ELISA assay to evaluate CLDN6-Strep-Nanodisc 0.2 μ g Human CLDN6-Strep-Nanodisc per well

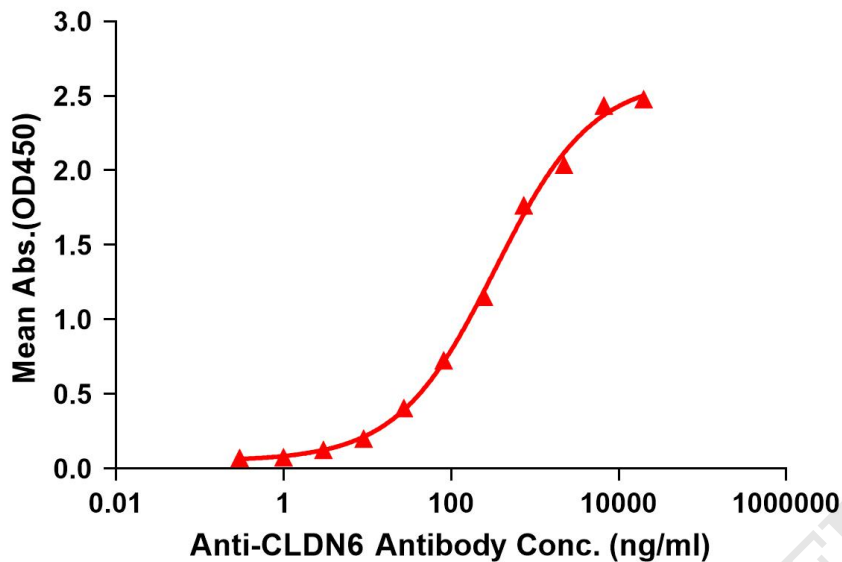


Figure 1. Elisa plates were pre-coated with C-Flag&Strep Tag CLDN6-Strep-Nanodisc (0.2 μ g/per well). Serial diluted anti-CLDN6 monoclonal antibody (BME100082) solutions were added, washed, and incubated with secondary antibody before Elisa reading. From above data, the EC50 for anti-CLDN6 monoclonal antibody binding with CLDN6-Strep-Nanodisc is 334.6ng/ml.

kDa M R

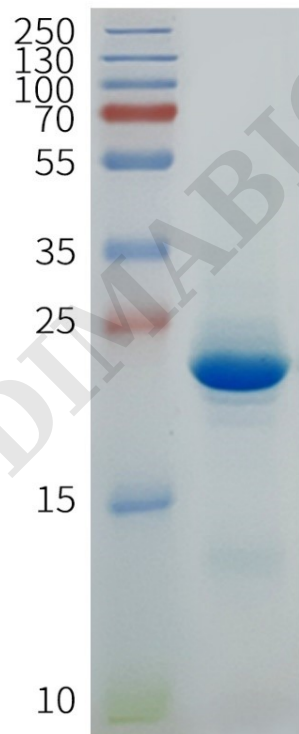


Figure 2. Human CLDN6-Strep-Nanodisc, C-Flag&Strep Tag on SDS-PAGE

