

PRODUCT INFORMATION

| | |
|---|---|
| Target | CLEC1A |
| Synonyms | CLEC1; CLEC-1 |
| Description | Recombinant human CLEC1A Protein with C-terminal 10×His tag |
| Delivery | In Stock |
| Uniprot ID | Q8NC01 |
| Expression Host | HEK293 |
| Tag | C-10×His tag |
| Molecular Characterization | CLEC1A(Gln74-Asp280) 10×His tag |
| Molecular Weight | The protein has a predicted molecular mass of 25.3 kDa after removal of the signal peptide. |
| Purity | The purity of the protein is greater than 85% as determined by SDS-PAGE and Coomassie blue staining. |
| Formulation & Reconstitution | Lyophilized from sterile PBS, pH 7.4. Normally 5% - 8% trehalose is added as protectants before lyophilization. Please see Certificate of Analysis for specific instructions of reconstitution. |
| Storage & Shipping | Store at -20°C to -80°C for 12 months in lyophilized form. After reconstitution, if not intended for use within a month, aliquot and store at -80°C (Avoid repeated freezing and thawing). Lyophilized proteins are shipped at ambient temperature. |
| Background | This gene encodes a member of the C-type lectin/C-type lectin-like domain (CTL/CTLD) superfamily. Members of this family share a common protein fold and have diverse functions, such as cell adhesion, cell-cell signaling, glycoprotein turnover, and roles in inflammation and immune response. The encoded protein may play a role in regulating dendritic cell function. This gene is closely linked to other CTL/CTLD superfamily members on chromosome 12p13 in the natural killer gene complex region. Alternative splicing results in multiple transcript variants. [provided by RefSeq, Jul 2014] |
| Usage | Research use only |
| Conjugate | Unconjugated |



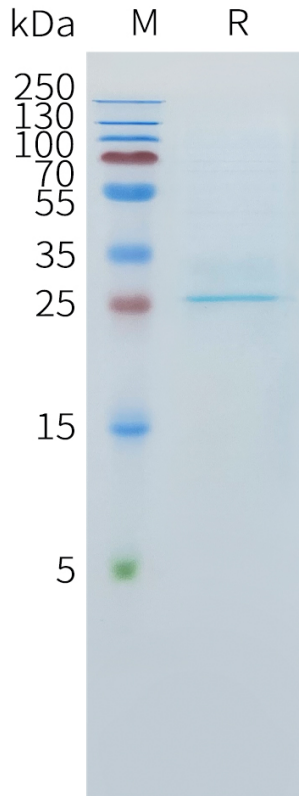


Figure 1. Human CLEC1A Protein, His Tag on SDS-PAGE under reducing condition.

DIMABIO CONFIDENTIAL

