

PRODUCT INFORMATION

| | |
|-----------------------------------------|-------------------------------------------------------------------------------------------------------------------------------------------------------------------------------------------------------------------------------------------------------------------------------------------------------------------------------------------------------------------------------------------------------------------------------------------------------------|
| Target | CLEC1B |
| Synonyms | CLEC2;CLEC2B;PRO1384;QDED721 |
| Description | Recombinant Human CLEC1B Protein with N-terminal 6×His tag |
| Delivery | In Stock |
| Uniprot ID | Q9P126 |
| Expression Host | HEK293 |
| Tag | N-6×His Tag |
| Molecular Characterization | 6×His tag CLEC1B(Ser55-Pro229) |
| Molecular Weight | The protein has a predicted molecular mass of 21.5 kDa after removal of the signal peptide. The apparent molecular mass of His-CLEC1B is approximately 25-35 kDa due to glycosylation. |
| Purity | The purity of the protein is greater than 85% as determined by SDS-PAGE and Coomassie blue staining. |
| Formulation & Reconstitution | Lyophilized from sterile PBS, pH 7.4. Normally 5% - 8% trehalose is added as protectants before lyophilization. Please see Certificate of Analysis for specific instructions of reconstitution. |
| Storage & Shipping | Store at -20°C to -80°C for 12 months in lyophilized form. After reconstitution, if not intended for use within a month, aliquot and store at -80°C (Avoid repeated freezing and thawing). Lyophilized proteins are shipped at ambient temperature. |
| Background | Natural killer (NK) cells express multiple calcium-dependent (C-type) lectin-like receptors, such as CD94 (KLRD1; MIM 602894) and NKG2D (KLRC4; MIM 602893), that interact with major histocompatibility complex class I molecules and either inhibit or activate cytotoxicity and cytokine secretion. CLEC2 is a C-type lectin-like receptor expressed in myeloid cells and NK cells (Colonna et al., 2000 [PubMed 10671229]).[supplied by OMIM, Jan 2011] |
| Usage | Research use only |
| Conjugate | Unconjugated |



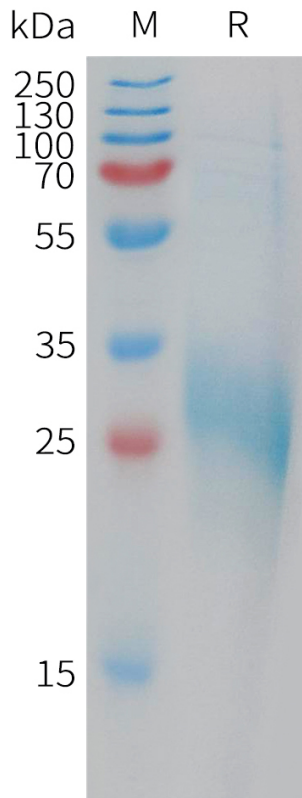


Figure 1. Human CLEC1B Protein, His Tag on SDS-PAGE under reducing condition.

DIMABIO CONFIDENTIAL

