

PRODUCT INFORMATION

Target	CTLA-4
Synonyms	CTLA4;CD152
Description	Recombinant human CTLA-4 protein with C-terminal mouse Fc and 6×His tag
Delivery	In Stock
Uniprot ID	P16410
Expression Host	HEK293
Tag	C-Mouse Fc and 6×His Tag
Molecular Characterization	CTLA-4(Lys36-Asp161) mFc(Pro99-Lys330) 6×His tag
Molecular Weight	The protein has a predicted molecular mass of 54 kDa after removal of the signal peptide.
Purity	The purity of the protein is greater than 95% as determined by SDS-PAGE and Coomassie blue staining.
Formulation & Reconstitution	Lyophilized from sterile PBS, pH 7.4. Normally 5% - 8% trehalose is added as protectants before lyophilization. Please see Certificate of Analysis for specific instructions of reconstitution.
Storage & Shipping	Store at -20°C to -80°C for 12 months in lyophilized form. After reconstitution, if not intended for use within a month, aliquot and store at -80°C (Avoid repeated freezing and thawing). Lyophilized proteins are shipped at ambient temperature.
Background	This gene is a member of the immunoglobulin superfamily and encodes a protein which transmits an inhibitory signal to T cells. The protein contains a V domain, a transmembrane domain, and a cytoplasmic tail. Alternate transcriptional splice variants, encoding different isoforms, have been characterized. The membrane-bound isoform functions as a homodimer interconnected by a disulfide bond, while the soluble isoform functions as a monomer. Mutations in this gene have been associated with insulin-dependent diabetes mellitus, Graves disease, Hashimoto thyroiditis, celiac disease, systemic lupus erythematosus, thyroid-associated orbitopathy, and other autoimmune diseases.
Usage	Research use only
Conjugate	Unconjugated



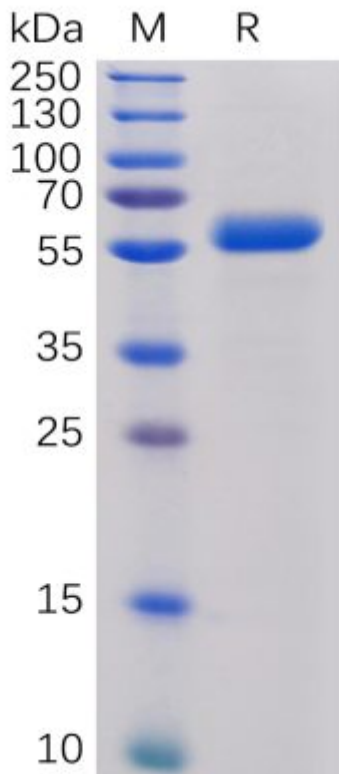


Figure 1. Human CTLA-4 Protein, mFc-His Tag on SDS-PAGE under reducing condition.

Human CTLA4, mFc-His Tagged protein ELISA

0.2 μ g of Human B7-1, hFc Tagged protein per well

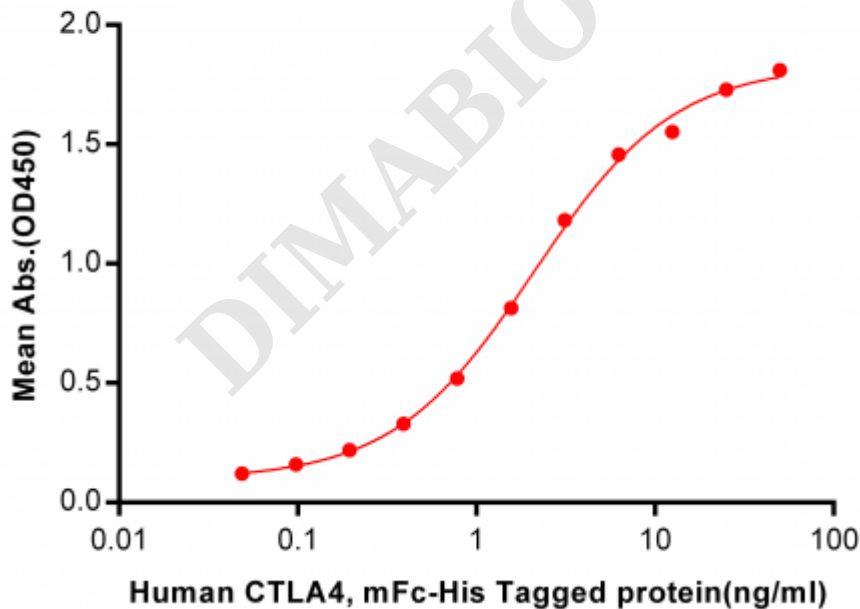


Figure 2. ELISA plate pre-coated by 2 μ g/ml (100 μ l/well) Human B7-1, hFc tagged protein ([getskuurl sku="PME100473"]) can bind Human CTLA4, mFc-His tagged protein (PME100017) in a linear range of 0.048-2.094 ng/ml.



Human CTLA4, mFc-His Tagged protein ELISA

0.2 μ g of Human B7-2, hFc Tagged protein per well

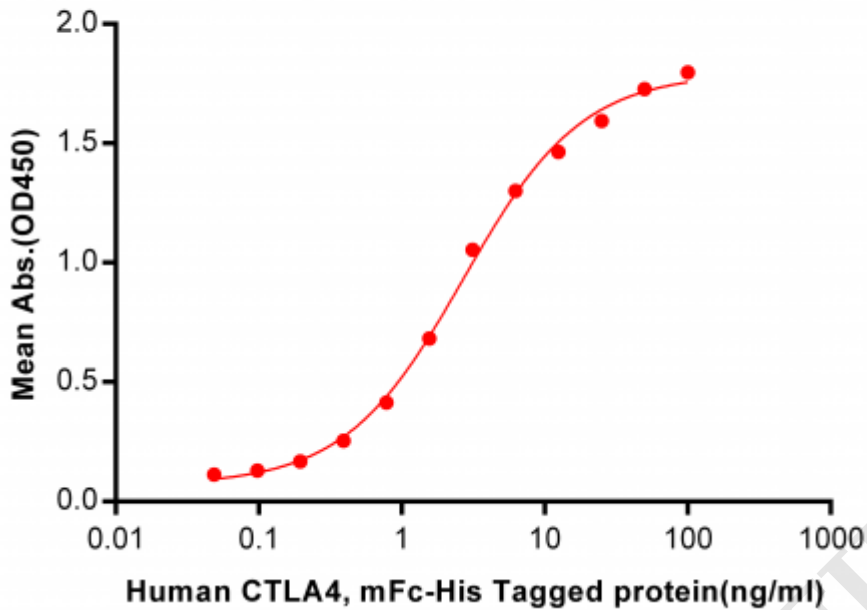


Figure 3. ELISA plate pre-coated by 2 μ g/ml (100 μ l/well) Human B7-2, hFc tagged protein ([getskuurl sku="PME100474"]) can bind Human CTLA4, mFc-His tagged protein (PME100017) in a linear range of 0.048-2.694 ng/ml.

Human CTLA-4, mFc-His Tagged protein ELISA

0.2 μ g of CTLA-4, mFc-His Tagged protein per well

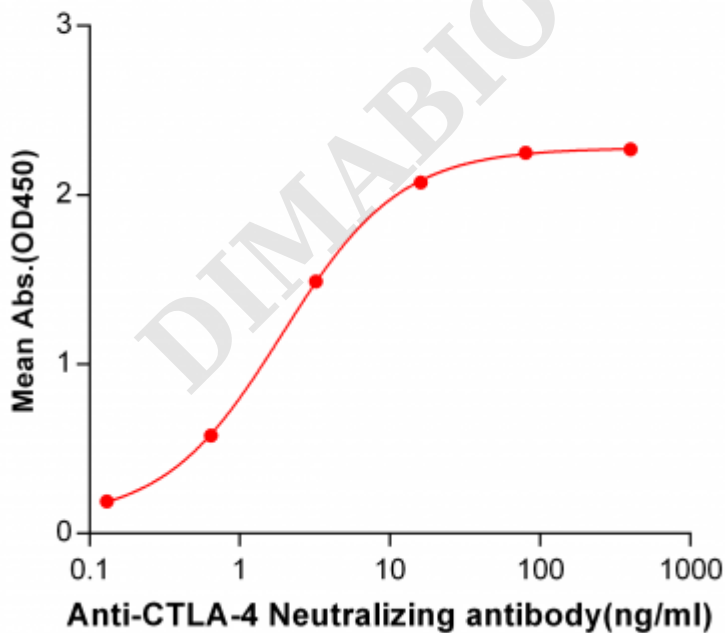


Figure 4. ELISA plate pre-coated by 2 μ g/ml (100 μ l/well) Human CTLA-4, mFc-His tagged protein (PME100017) can bind Anti-CTLA-4 Neutralizing antibody ([getskuurl sku="BME100022"]) in a linear range of 0.13-16.0 ng/ml.



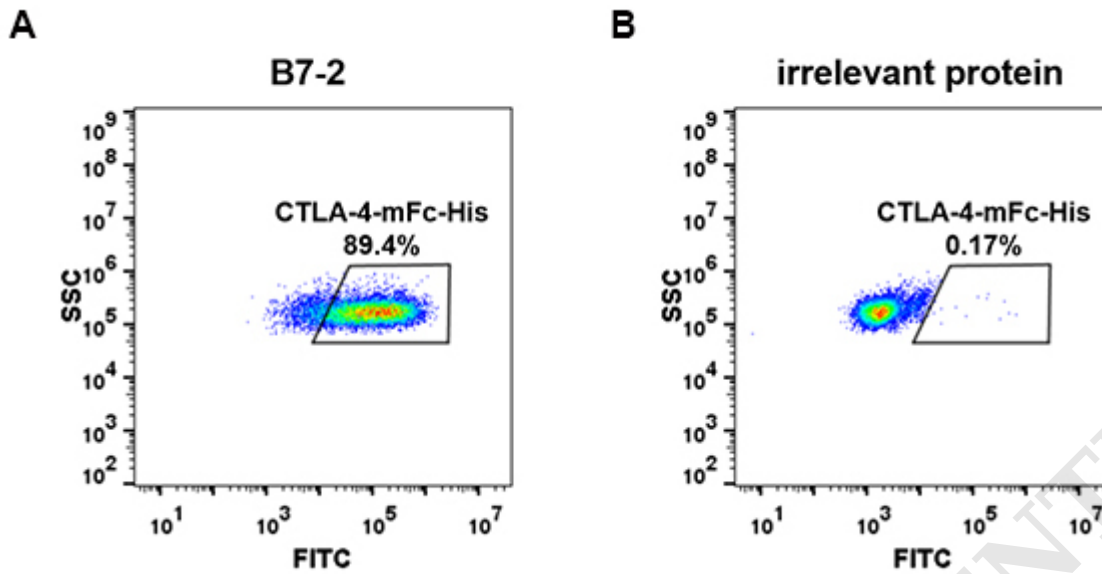


Figure 5. HEK293 cell line transfected with irrelevant protein (**B**) and human B7-2 (**A**) were surface stained with Human CTLA4, mFc-His tagged protein (PME100017) $1\mu\text{g/ml}$ followed by Alexa 488-conjugated anti-mouse IgG secondary antibody.

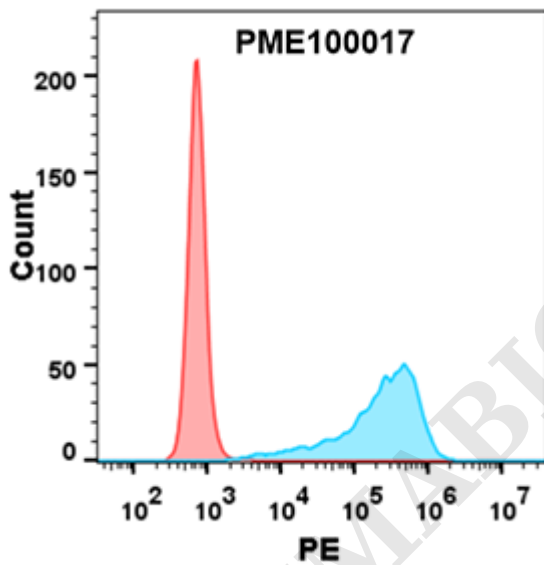


Figure 6. Flow cytometry analysis with $1\mu\text{g/ml}$ Human CTLA4 Protein, mFc-His tag (PME100017) on Expi293 cells transfected with human B7-1 (Blue histogram) or Expi293 transfected with irrelevant protein (Red histogram).

