

PRODUCT INFORMATION

Target	CXCR3
Synonyms	CD182;CD183;CKR-L2;CMKAR3;GPR9;IP10-R;Mig-R;MigR
Description	Recombinant Human CXCR3 with C-terminal human Fc tag
Delivery	In Stock
Uniprot ID	P49682
Expression Host	HEK293
Tag	C-Human Fc Tag
Molecular Characterization	CXCR3(Met1-Arg53) hFc(Glu99-Ala330)
Molecular Weight	The protein has a predicted molecular mass of 32.0 kDa after removal of the signal peptide. The apparent molecular mass of CXCR3-hFc is approximately 35-55 kDa due to glycosylation.
Purity	The purity of the protein is greater than 95% as determined by SDS-PAGE and Coomassie blue staining.
Formulation & Reconstitution	Lyophilized from sterile PBS, pH 7.4. Normally 5% - 8% trehalose is added as protectants before lyophilization. Please see Certificate of Analysis for specific instructions of reconstitution.
Yefei_Storage	Store at -20°C to -80°C for 12 months in lyophilized form. After reconstitution, if not intended for use within a month, aliquot and store at -80°C (Avoid repeated freezing and thawing). Lyophilized proteins are shipped at ambient temperature.
Background	This gene encodes a G protein-coupled receptor with selectivity for three chemokines, termed CXCL9/Mig (monokine induced by interferon-g), CXCL10/IP10 (interferon-g-inducible 10 kDa protein) and CXCL11/I-TAC (interferon-inducible T cell a-chemoattractant). Binding of chemokines to this protein induces cellular responses that are involved in leukocyte traffic, most notably integrin activation, cytoskeletal changes and chemotactic migration. Alternatively spliced transcript variants encoding different isoforms have been found for this gene. One of the isoforms (CXCR3-B) shows high affinity binding to chemokine, CXCL4/PF4 (PMID:12782716). [provided by RefSeq, Jun 2011]
Usage	Research use only
Conjugate	Unconjugated



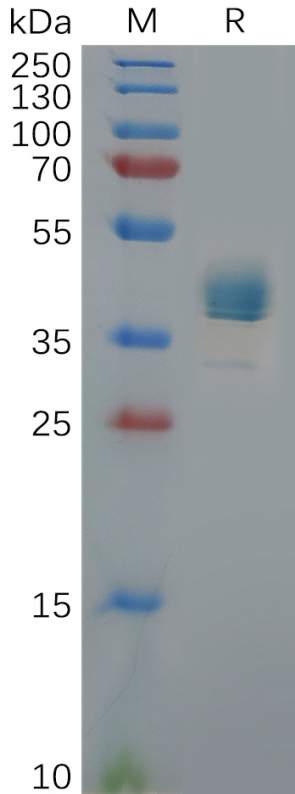


Figure 1. Human CXCR3 Protein, hFc Tag on SDS-PAGE under reducing condition.

Human CXCR3,hFc Tagged protein ELISA

0.2 μ g of Human CXCR3, hFc tagged protein per well

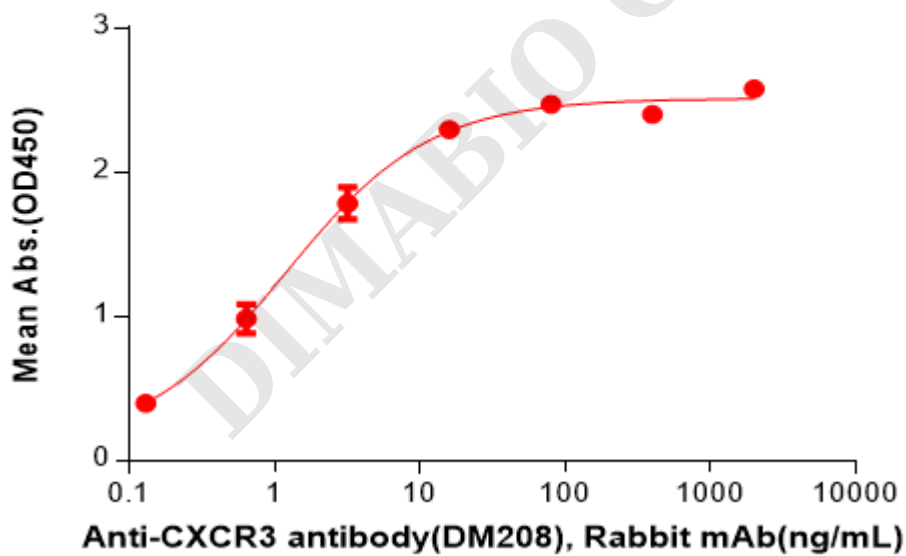


Figure 2. ELISA plate pre-coated by 2 μ g/mL (100 μ L/well) Human CXCR3 Protein, hFc Tag(PME100833) can bind Anti-CXCR3 antibody(DM208), Rabbit mAb in a linear range of 0.13-3.20 ng/mL.



Human CXCR3, hFc Tagged protein ELISA

0.2 μ g of Human CXCR3, hFc tagged protein per well

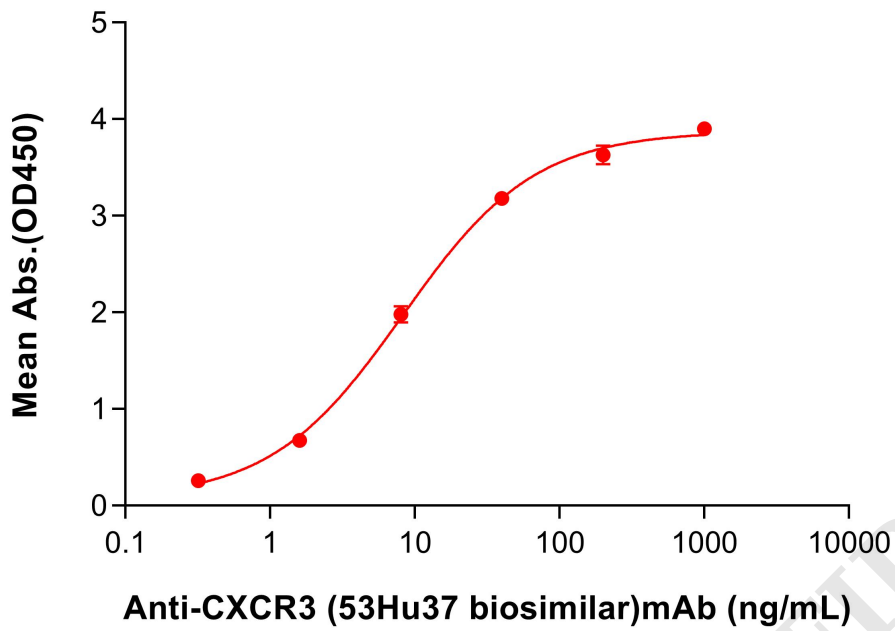


Figure 3. ELISA plate pre-coated by 2 μ g/mL (100 μ L/well) Human CXCR3 Protein, hFc Tag (PME100833) can bind Anti-CXCR3 (53Hu37 biosimilar)mAb (BME100283) in a linear range of 1.6-8 ng/mL.

