

PRODUCT INFORMATION

| | |
|-----------------------------------------|--------------------------------------------------------------------------------------------------------------------------------------------------------------------------------------------------------------------------------------------------------------------------------------------------------------------------------------------------------------------------------------------|
| Target | DLL3 |
| Synonyms | SCDO1 |
| Description | Recombinant human DLL3 protein with C-terminal human Fc tag |
| Delivery | In Stock |
| Uniprot ID | Q9NYJ7 |
| Expression Host | HEK293 |
| Tag | C-Human Fc Tag |
| Molecular Characterization | DLL3(Ala27-Arg490) hFc(Glu99-Ala330) |
| Molecular Weight | The protein has a predicted molecular mass of 74.4 kDa after removal of the signal peptide. The apparent molecular mass of DLL3-hFc is approximately 100-130 kDa due to glycosylation. |
| Purity | The purity of the protein is greater than 80% as determined by SDS-PAGE and Coomassie blue staining. |
| Formulation & Reconstitution | Lyophilized from sterile PBS, pH 7.4. Normally 5% - 8% trehalose is added as protectants before lyophilization. Please see Certificate of Analysis for specific instructions of reconstitution. |
| Storage & Shipping | Store at -20°C to -80°C for 12 months in lyophilized form. After reconstitution, if not intended for use within a month, aliquot and store at -80°C (Avoid repeated freezing and thawing). Lyophilized proteins are shipped at ambient temperature. |
| Background | This gene encodes a member of the delta protein ligand family. This family functions as Notch ligands that are characterized by a DSL domain, EGF repeats, and a transmembrane domain. Mutations in this gene cause autosomal recessive spondylocostal dysostosis 1. Two transcript variants encoding distinct isoforms have been identified for this gene. [provided by RefSeq, Jul 2008] |
| Usage | Research use only |
| Conjugate | Unconjugated |



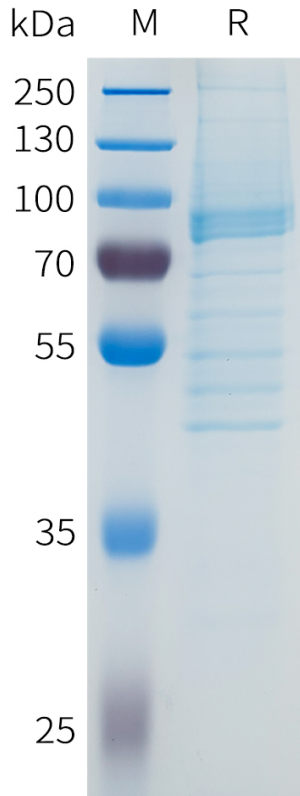


Figure 1. Human DLL3 Protein, hFc Tag on SDS-PAGE under reducing condition.

Human DLL3, hFc Tagged protein ELISA

0.2 μ g of Human DLL3, hFc tagged protein per well

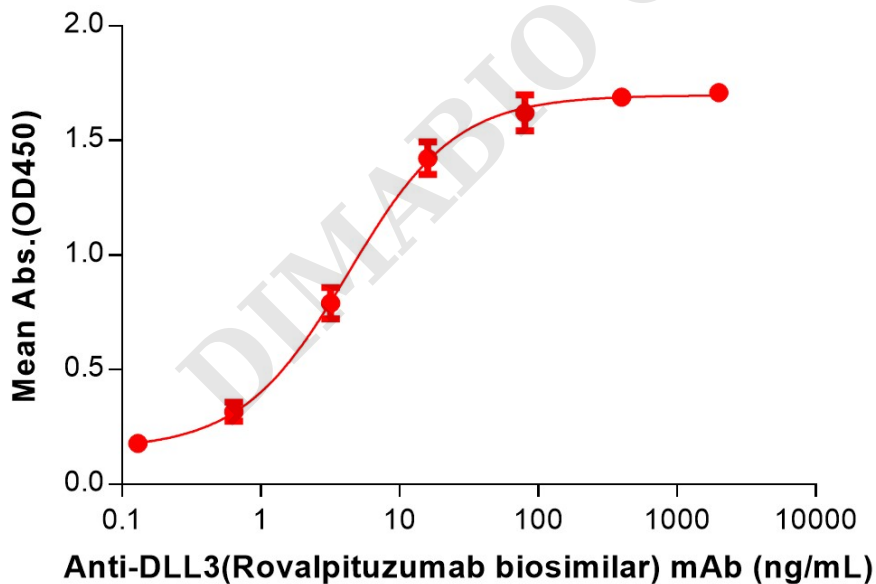


Figure 2. ELISA plate pre-coated by 2 μ g/mL (100 μ L/well) Human DLL3 Protein, hFc Tag (PME100607) can bind Anti-DLL3(Rovalpituzumab biosimilar) mAb (BME100068) in a linear range of 0.64–80 ng/mL.

