

**PRODUCT INFORMATION**

|   |  |
|---|--|
| <b>Target</b>                           | F2RL1  |
| <b>Synonyms</b>                         | GPR11;PAR2   |
| <b>Description</b>                      | Recombinant human F2RL1 protein with C-terminal human Fc tag   |
| <b>Delivery</b>                         | In Stock   |
| <b>Uniprot ID</b>                       | P55085   |
| <b>Expression Host</b>                  | HEK293   |
| <b>Tag</b>                              | C-Human Fc Tag   |
| <b>Molecular Characterization</b>       | F2RL1(Ser37-Gly71) hFc(Glu99-Ala330)   |
| <b>Molecular Weight</b>                 | The protein has a predicted molecular mass of 29.7 kDa after removal of the signal peptide. The apparent molecular mass of F2RL1-hFc is approximately 33-53 kDa due to glycosylation.  |
| <b>Purity</b>                           | The purity of the protein is greater than 95% as determined by SDS-PAGE and Coomassie blue staining.   |
| <b>Formulation &amp; Reconstitution</b> | Lyophilized from sterile PBS, pH 7.4. Normally 5% - 8% trehalose is added as protectants before lyophilization. Please see Certificate of Analysis for specific instructions of reconstitution.  |
| <b>Yefei_Storage</b>                    | Store at -20°C to -80°C for 12 months in lyophilized form. After reconstitution, if not intended for use within a month, aliquot and store at -80°C (Avoid repeated freezing and thawing). Lyophilized proteins are shipped at ambient temperature.  |
| <b>Background</b>                       | This gene encodes a member of the G-protein coupled receptor 1 family of proteins. The encoded cell surface receptor is activated through proteolytic cleavage of its extracellular amino terminus, resulting in a new amino terminus that acts as a tethered ligand that binds to an extracellular loop domain. Activation of the receptor has been shown to stimulate vascular smooth muscle relaxation, dilate blood vessels, increase blood flow, and lower blood pressure. This protein is also important in the inflammatory response, as well as innate and adaptive immunity. [provided by RefSeq, Jun 2016] |
| <b>Usage</b>                            | Research use only  |
| <b>Conjugate</b>                        | Unconjugated   |



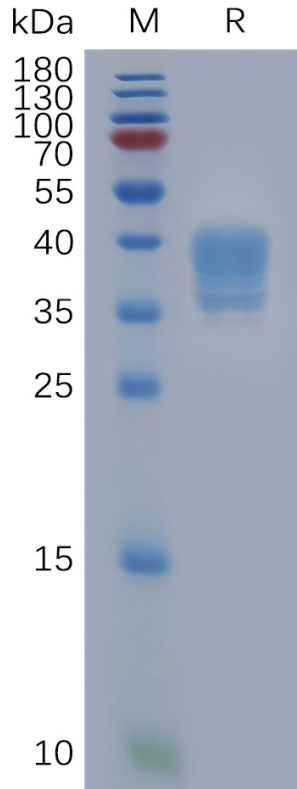


Figure 1. Human F2RL1 Protein, hFc Tag on SDS-PAGE under reducing condition.

DIMABIO CONFIDENTIAL

