

PRODUCT INFORMATION

| | |
|---|---|
| Target | FGL1 |
| Synonyms | HFREP1;HP-041;HPS;LFIRE-1;LFIRE1 |
| Description | Recombinant Human FGL1 protein with C-terminal 6×His tag |
| Delivery | In Stock |
| Uniprot ID | Q08830 |
| Expression Host | HEK293 |
| Tag | C-6×His Tag |
| Molecular Characterization | FGL1(Leu23-Ile312) 6×His tag |
| Molecular Weight | The protein has a predicted molecular mass of 34.8 kDa after removal of the signal peptide. The apparent molecular mass of FGL1-His is approximately 25-35 kDa due to glycosylation. |
| Purity | The purity of the protein is greater than 85% as determined by SDS-PAGE and Coomassie blue staining. |
| Formulation & Reconstitution | Lyophilized from sterile PBS, pH 7.4. Normally 5 % - 8% trehalose is added as protectants before lyophilization. Please see Certificate of Analysis for specific instructions of reconstitution. |
| Storage & Shipping | Store at -20°C to -80°C for 12 months in lyophilized form. After reconstitution, if not intended for use within a month, aliquot and store at -80°C (Avoid repeated freezing and thawing). Lyophilized proteins are shipped at ambient temperature. |
| Background | Fibrinogen-like 1 is a member of the fibrinogen family. This protein is homologous to the carboxy terminus of the fibrinogen beta- and gamma-subunits which contains the four conserved cysteines of fibrinogens and fibrinogen related proteins. However, this protein lacks the platelet-binding site, cross-linking region and a thrombin-sensitive site which are necessary for fibrin clot formation. This protein may play a role in the development of hepatocellular carcinomas. Four alternatively spliced transcript variants encoding the same protein exist for this gene. [provided by RefSeq, Jul 2008] |
| Usage | Research use only |
| Conjugate | Unconjugated |



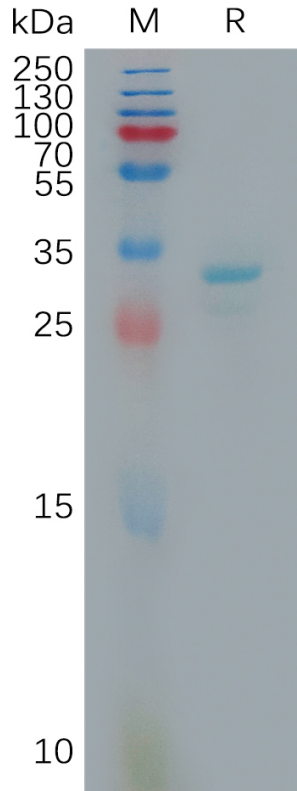


Figure 1. Human FGL1 Protein, His Tag on SDS-PAGE under reducing condition.

DIMABIO CONFIDENTIAL

