

**PRODUCT INFORMATION**

<b>Target</b>	GAS6
<b>Synonyms</b>	AXLLG;AXSF
<b>Description</b>	Recombinant human GAS6 protein with C-terminal 6×His tag
<b>Delivery</b>	In Stock
<b>Uniprot ID</b>	Q14393
<b>Expression Host</b>	HEK293
<b>Tag</b>	C-6×His Tag
<b>Molecular Characterization</b>	GAS6(Ala31-Ala678) 6×His tag
<b>Molecular Weight</b>	The protein has a predicted molecular mass of 72.7 kDa after removal of the signal peptide. The apparent molecular mass of GAS6-His is approximately 70-100 kDa due to glycosylation.
<b>Purity</b>	The purity of the protein is greater than 85% as determined by SDS-PAGE and Coomassie blue staining.
<b>Formulation &amp; Reconstitution</b>	Lyophilized from sterile PBS, pH 7.4. Normally 5% - 8% trehalose is added as protectants before lyophilization. Please see Certificate of Analysis for specific instructions of reconstitution.
<b>Yefei_Storage</b>	Store at -20°C to -80°C for 12 months in lyophilized form. After reconstitution, if not intended for use within a month, aliquot and store at -80°C (Avoid repeated freezing and thawing). Lyophilized proteins are shipped at ambient temperature.
<b>Background</b>	This gene encodes a gamma-carboxyglutamic acid (Gla)-containing protein thought to be involved in the stimulation of cell proliferation. This gene is frequently overexpressed in many cancers and has been implicated as an adverse prognostic marker. Elevated protein levels are additionally associated with a variety of disease states, including venous thromboembolic disease, systemic lupus erythematosus, chronic renal failure, and preeclampsia. [provided by RefSeq, Aug 2014]
<b>Usage</b>	Research use only
<b>Conjugate</b>	Unconjugated



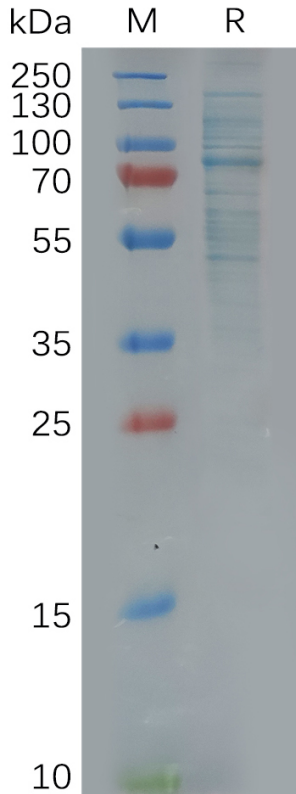


Figure 1. Human GAS6 Protein, His Tag on SDS-PAGE under reducing condition.

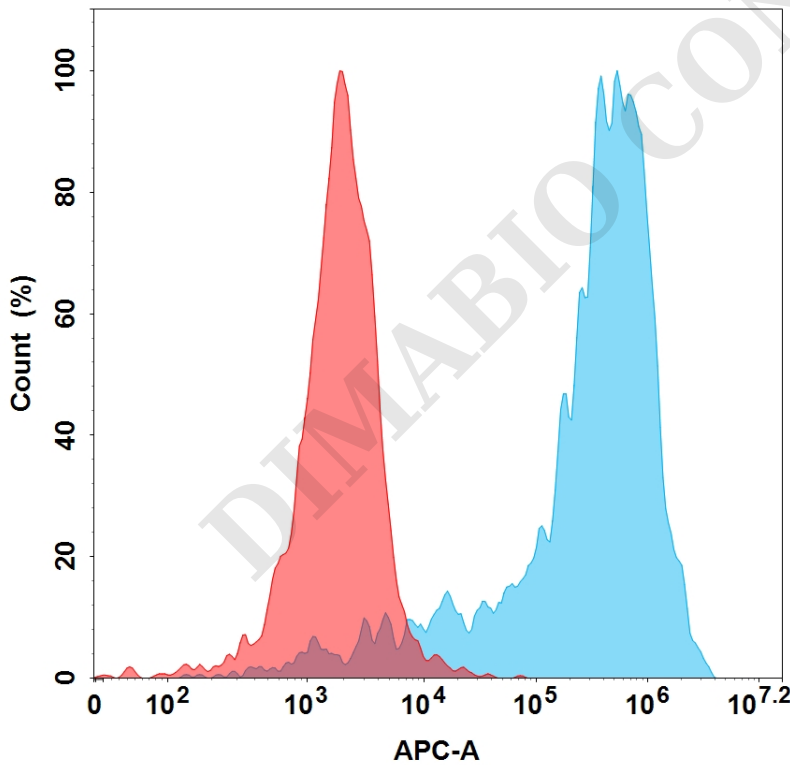
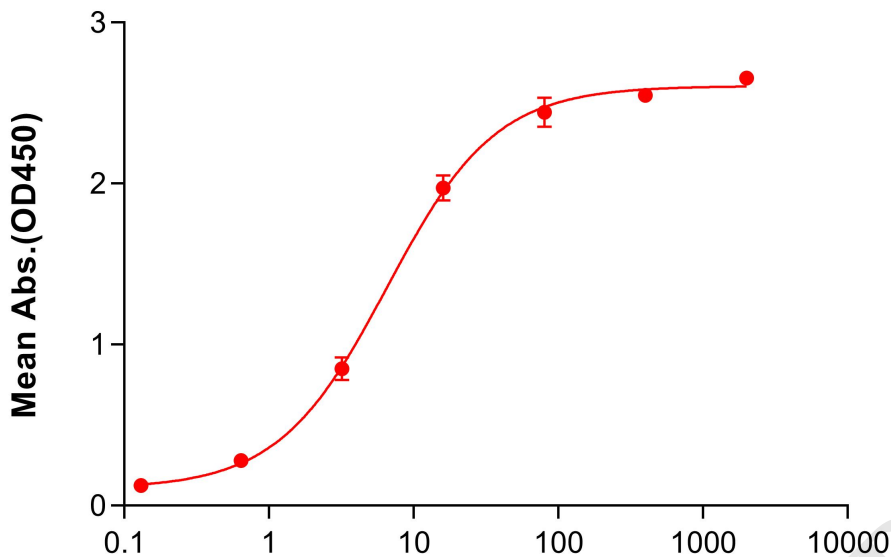


Figure 2. Flow cytometry analysis with 15  $\mu\text{g}/\text{mL}$  Human GAS6 Protein, His Tag (PME100619) on HEK293 cells transfected with Human AXL protein (Blue histogram) or HEK293 transfected with irrelevant protein (Red histogram).



### Human GAS6, His Tagged protein ELISA

0.2  $\mu\text{g}$  of Human GAS6, His tagged protein per well



**Anti-GAS6 antibody(8D1), IgG1 Chimeric mAb (ng/mL)**

Figure 3. ELISA plate pre-coated by 2  $\mu\text{g}/\text{mL}$  (100  $\mu\text{L}/\text{well}$ ) Human GAS6 Protein, His Tag (PME100619) can bind Anti-GAS6 antibody(8D1), IgG1 Chimeric mAb (DMC101359) in a linear range of 3.2-16 ng/mL.

