

PRODUCT INFORMATION

| | |
|---|--|
| Target | HGF |
| Synonyms | SF; HGFB; HPTA; F-TCF; DFN39 |
| Description | Recombinant human HGF(1-728) Protein with C-terminal human Fc tag |
| Delivery | In Stock |
| Uniprot ID | P14210 |
| Expression Host | HEK293 |
| Tag | C-Human Fc tag |
| Molecular Characterization | HGF(Met1-Ser728) hFc(Glu99-Ala330) |
| Molecular Weight | The protein has a predicted molecular mass of 109.3 kDa after removal of the signal peptide. The apparent molecular mass of HGF(1-728)-hFc is approximately 70-130 kDa due to glycosylation. |
| Purity | The purity of the protein is greater than 95% as determined by SDS-PAGE and Coomassie blue staining. |
| Formulation & Reconstitution | Lyophilized from sterile PBS, pH 7.4. Normally 5% - 8% trehalose is added as protectants before lyophilization. Please see Certificate of Analysis for specific instructions of reconstitution. |
| Yefei_Storage | Store at -20°C to -80°C for 12 months in lyophilized form. After reconstitution, if not intended for use within a month, aliquot and store at -80°C (Avoid repeated freezing and thawing). Lyophilized proteins are shipped at ambient temperature. |
| Background | This gene encodes a protein that binds to the hepatocyte growth factor receptor to regulate cell growth, cell motility and morphogenesis in numerous cell and tissue types. Alternative splicing results in multiple transcript variants, at least one of which encodes a preproprotein that is proteolytically processed to generate alpha and beta chains, which form the mature heterodimer. This protein is secreted by mesenchymal cells and acts as a multi-functional cytokine on cells of mainly epithelial origin. This protein also plays a role in angiogenesis, tumorigenesis, and tissue regeneration. Although the encoded protein is a member of the peptidase S1 family of serine proteases, it lacks peptidase activity. Mutations in this gene are associated with nonsyndromic hearing loss. [provided by RefSeq, Nov 2015] |
| Usage | Research use only |
| Conjugate | Unconjugated |



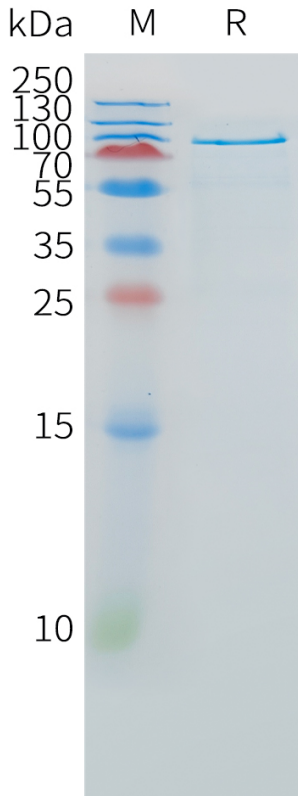


Figure 1. Human HGF(1-728) Protein, hFc Tag on SDS-PAGE under reducing condition.

Human HGF(1-728), hFc Tagged protein ELISA

0.2 µg of Human HGF(1-728), hFc tagged protein per well

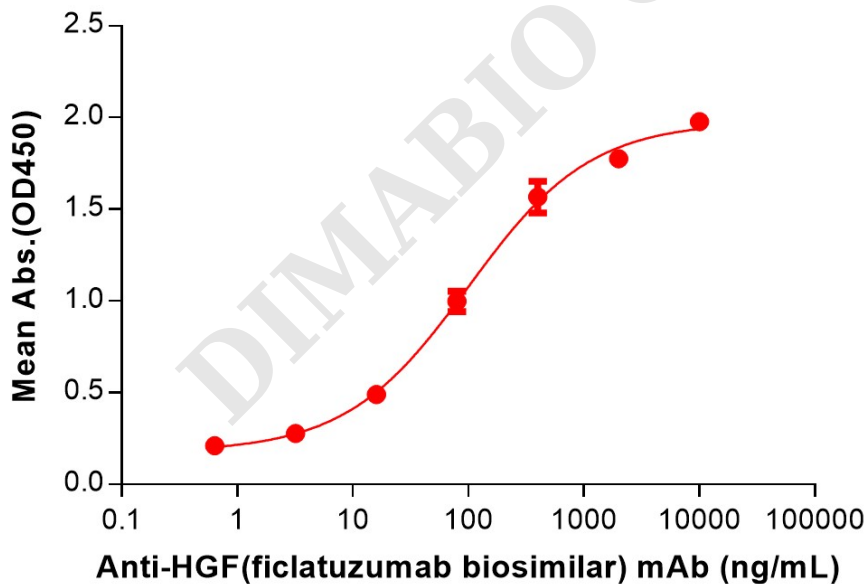


Figure 2. ELISA plate pre-coated by 2 µg/mL (100 µL/well) Human HGF(1-728) Protein, hFc Tag (PME101528) can bind Anti-HGF(ficlatuzumab biosimilar) mAb (BME100139) in a linear range of 16-2000 ng/mL.



Human HGF(1-728), hFc Tagged protein ELISA

0.2 µg of Human MET, His tagged protein per well

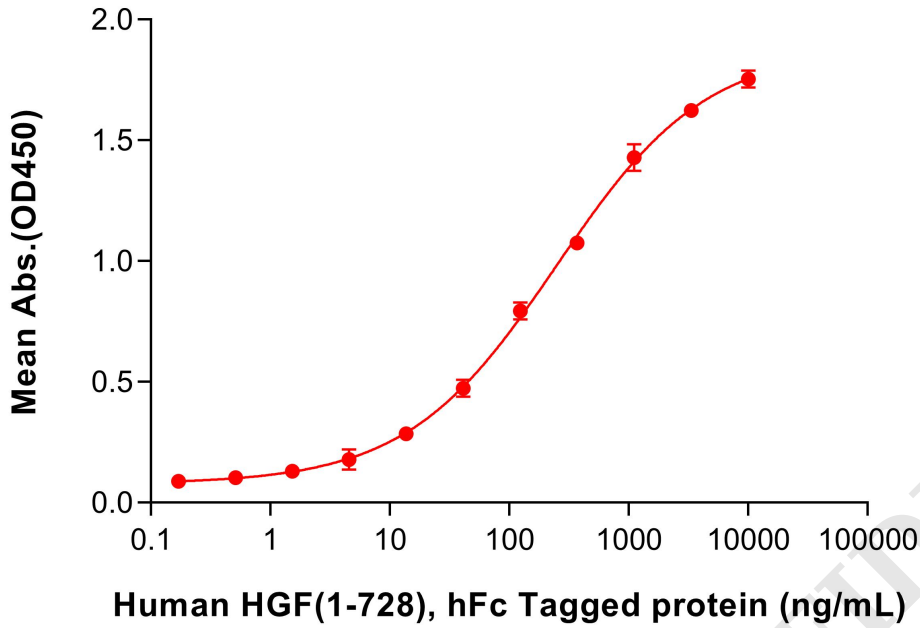


Figure 3. ELISA plate pre-coated by 2 µg/mL (100 µL/well) Human MET Protein, His (PME101405) can bind Human HGF(1-728), hFc (PME101528) in a linear range of 13.72-1111.11 ng/mL.

