

**PRODUCT INFORMATION**

<b>Target</b>	ICAM-1
<b>Synonyms</b>	ICAM1;BB2;CD54;P3.58
<b>Description</b>	Recombinant human ICAM-1 protein with C-terminal mouse Fc tag
<b>Delivery</b>	In Stock
<b>Uniprot ID</b>	P05362
<b>Expression Host</b>	HEK293
<b>Tag</b>	C-Mouse Fc Tag
<b>Molecular Characterization</b>	ICAM-1(Gln28-Glu480) mFc(Pro99-Lys330)
<b>Molecular Weight</b>	The protein has a predicted molecular mass of 75.7 kDa after removal of the signal peptide. The apparent molecular mass of ICAM-1-mFc is approximately 90-120 kDa due to glycosylation.
<b>Purity</b>	The purity of the protein is greater than 95% as determined by SDS-PAGE and Coomassie blue staining.
<b>Formulation &amp; Reconstitution</b>	Lyophilized from sterile PBS, pH 7.4. Normally 5% - 8% trehalose is added as protectants before lyophilization. Please see Certificate of Analysis for specific instructions of reconstitution.
<b>Yefei_Storage</b>	Store at -20°C to -80°C for 12 months in lyophilized form. After reconstitution, if not intended for use within a month, aliquot and store at -80°C (Avoid repeated freezing and thawing). Lyophilized proteins are shipped at ambient temperature.
<b>Background</b>	This gene encodes a cell surface glycoprotein which is typically expressed on endothelial cells and cells of the immune system. It binds to integrins of type CD11a / CD18, or CD11b / CD18 and is also exploited by Rhinovirus as a receptor.
<b>Usage</b>	Research use only
<b>Conjugate</b>	Unconjugated



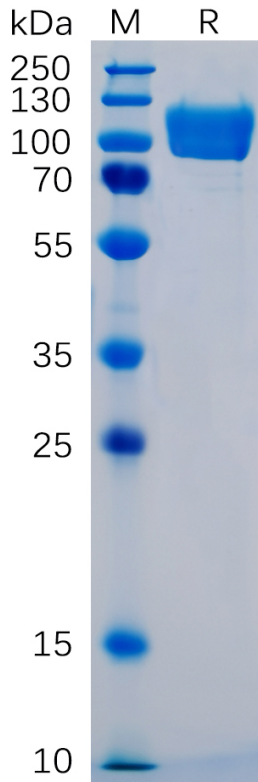


Figure 1. Human ICAM-1 Protein, mFc Tag on SDS-PAGE under reducing condition.

### Human ICAM1, mFc Tagged protein ELISA

0.2  $\mu$ g of Human ICAM1, mFc tagged protein per well

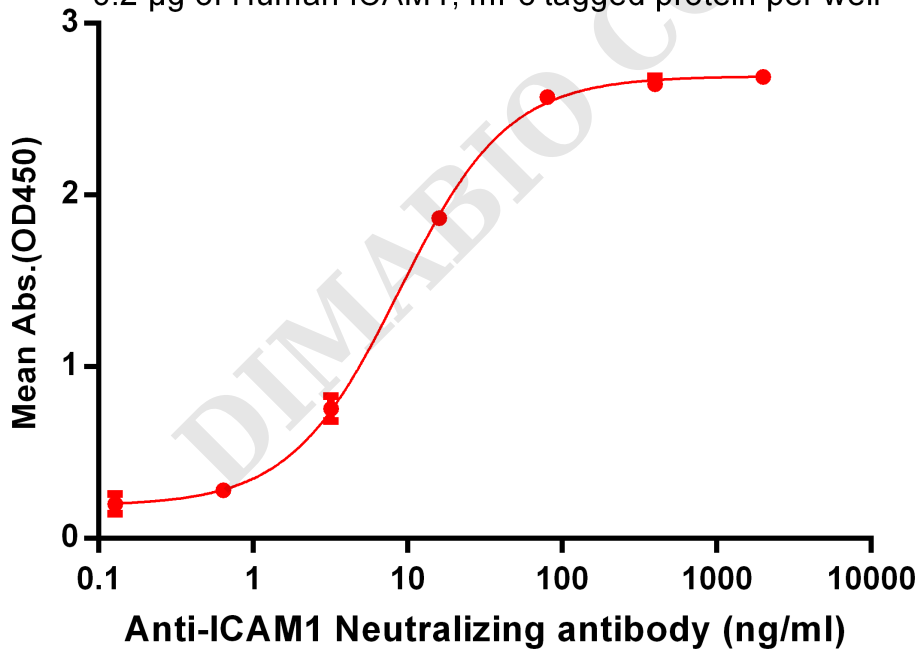


Figure 2. ELISA plate pre-coated by 2  $\mu$ g/ml (100  $\mu$ l/well) Human ICAM1, mFc tagged protein (PME100062) can bind Anti-ICAM1 Antibody BME100036 in a linear range of 0.64-80.0 ng/ml.

