

**PRODUCT INFORMATION**

<b>Target</b>	IL13RA1
<b>Synonyms</b>	CD213A1;CT19;IL-13Ra;NR4
<b>Description</b>	Recombinant Human IL13RA1 Protein with C-terminal 6×His tag
<b>Delivery</b>	In Stock
<b>Uniprot ID</b>	P78552
<b>Expression Host</b>	HEK293
<b>Tag</b>	C-6×His Tag
<b>Molecular Characterization</b>	IL13RA1(Gly22-Thr343) 6×His tag
<b>Molecular Weight</b>	The protein has a predicted molecular mass of 37.7 kDa after removal of the signal peptide. The apparent molecular mass of IL13RA1-His is approximately 55-70 kDa due to glycosylation.
<b>Purity</b>	The purity of the protein is greater than 95% as determined by SDS-PAGE and Coomassie blue staining.
<b>Formulation &amp; Reconstitution</b>	Lyophilized from sterile PBS, pH 7.4. Normally 5% - 8% trehalose is added as protectants before lyophilization. Please see Certificate of Analysis for specific instructions of reconstitution.
<b>Storage &amp; Shipping</b>	Store at -20°C to -80°C for 12 months in lyophilized form. After reconstitution, if not intended for use within a month, aliquot and store at -80°C (Avoid repeated freezing and thawing). Lyophilized proteins are shipped at ambient temperature.
<b>Background</b>	The protein encoded by this gene is a subunit of the interleukin 13 receptor. This subunit forms a receptor complex with IL4 receptor alpha, a subunit shared by IL13 and IL4 receptors. This subunit serves as a primary IL13-binding subunit of the IL13 receptor, and may also be a component of IL4 receptors. This protein has been shown to bind tyrosine kinase TYK2, and thus may mediate the signaling processes that lead to the activation of JAK1, STAT3 and STAT6 induced by IL13 and IL4. [provided by RefSeq, Jul 2008]
<b>Usage</b>	Research use only
<b>Conjugate</b>	Unconjugated



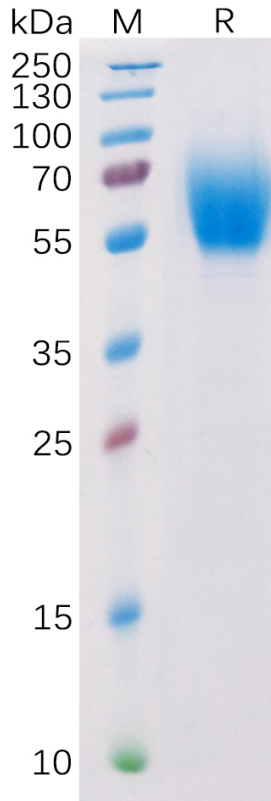


Figure 1. Human IL13RA1 Protein, His Tag on SDS-PAGE under reducing condition.

### Human IL13RA1, His Tagged protein ELISA

0.2  $\mu$ g of Human IL13RA1, His tagged protein per well

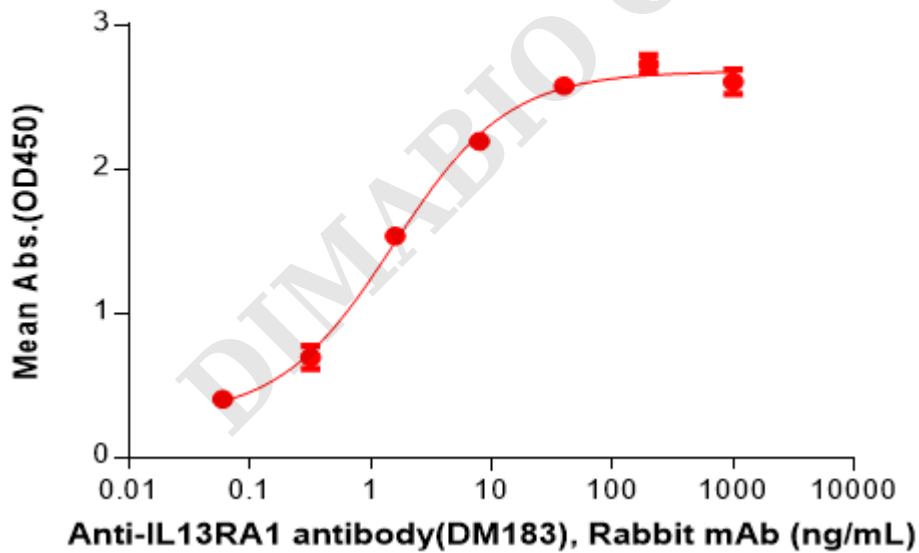


Figure 2. ELISA plate pre-coated by 2  $\mu$ g/mL (100  $\mu$ L/well) Human IL13RA1 Protein, His Tag(PME100291) can bind Anti-IL13RA1 antibody(DM183), Rabbit mAb in a linear range of 0.32–8.0 ng/mL.



### Human IL13RA1, His Tagged protein ELISA

0.2  $\mu$ g of Human IL13RA1, His tagged protein per well

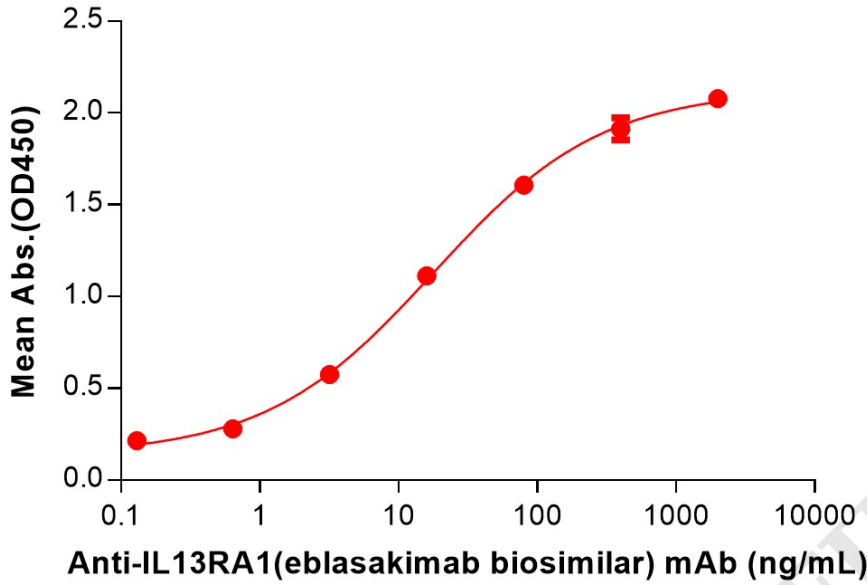


Figure 3. ELISA plate pre-coated by 2  $\mu$ g/mL (100  $\mu$ L/well) Human IL13RA1 Protein, His Tag (PME100291) can bind Anti-IL13RA1(eblasakimab biosimilar) mAb (BME100240) in a linear range of 0.64-80 ng/mL.

