

**PRODUCT INFORMATION**

<b>Target</b>	IL1RL2
<b>Synonyms</b>	IL-1Rrp2;IL-36R;IL1R-rp2;IL1RRP2
<b>Description</b>	Recombinant Human IL1RL2 Protein with C-terminal 6×His tag
<b>Delivery</b>	In Stock
<b>Uniprot ID</b>	Q9HB29
<b>Expression Host</b>	HEK293
<b>Tag</b>	C-6×His Tag
<b>Molecular Characterization</b>	IL1RL2(Asp20-Arg335) 6×His tag
<b>Molecular Weight</b>	The protein has a predicted molecular mass of 36.8 kDa after removal of the signal peptide.
<b>Purity</b>	The purity of the protein is greater than 85% as determined by SDS-PAGE and Coomassie blue staining.
<b>Formulation &amp; Reconstitution</b>	Lyophilized from sterile PBS, pH 7.4. Normally 5 % - 8% trehalose is added as protectants before lyophilization. Please see Certificate of Analysis for specific instructions of reconstitution.
<b>Yefei_Storage</b>	Store at -20°C to -80°C for 12 months in lyophilized form. After reconstitution, if not intended for use within a month, aliquot and store at -80°C (Avoid repeated freezing and thawing). Lyophilized proteins are shipped at ambient temperature.
<b>Background</b>	The protein encoded by this gene is a member of the interleukin 1 receptor family. An experiment with transient gene expression demonstrated that this receptor was incapable of binding to interleukin 1 alpha and interleukin 1 beta with high affinity. This gene and four other interleukin 1 receptor family genes, including interleukin 1 receptor, type I (IL1R1), interleukin 1 receptor, type II (IL1R2), interleukin 1 receptor-like 1 (IL1RL1), and interleukin 18 receptor 1 (IL18R1), form a cytokine receptor gene cluster in a region mapped to chromosome 2q12. [provided by RefSeq, Jul 2008]
<b>Usage</b>	Research use only
<b>Conjugate</b>	Unconjugated



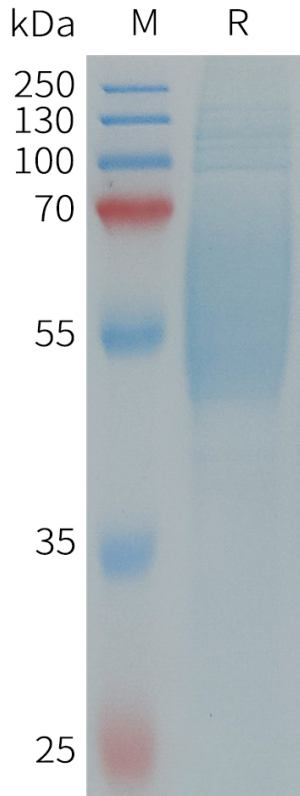


Figure 1. Human IL1RL2 Protein, His Tag on SDS-PAGE under reducing condition.

### Human IL1RL2, His Tagged protein ELISA

0.2  $\mu$ g of Human IL1RL2, His tagged protein per well

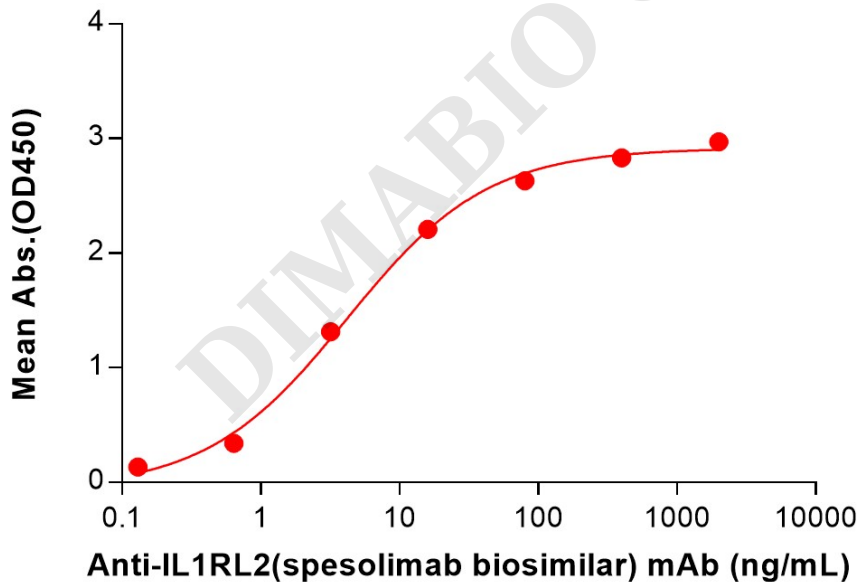


Figure 2. ELISA plate pre-coated by 2  $\mu$ g/mL (100  $\mu$ L/well) Human IL1RL2 Protein, His Tag (PME101318) can bind Anti-IL1RL2(spesolimab biosimilar) mAb (BME100235) in a linear range of 0.64-80 ng/mL.



### Human IL1RL2, His Tagged protein ELISA

0.2  $\mu$ g of Human IL1RL2, His tagged protein per well

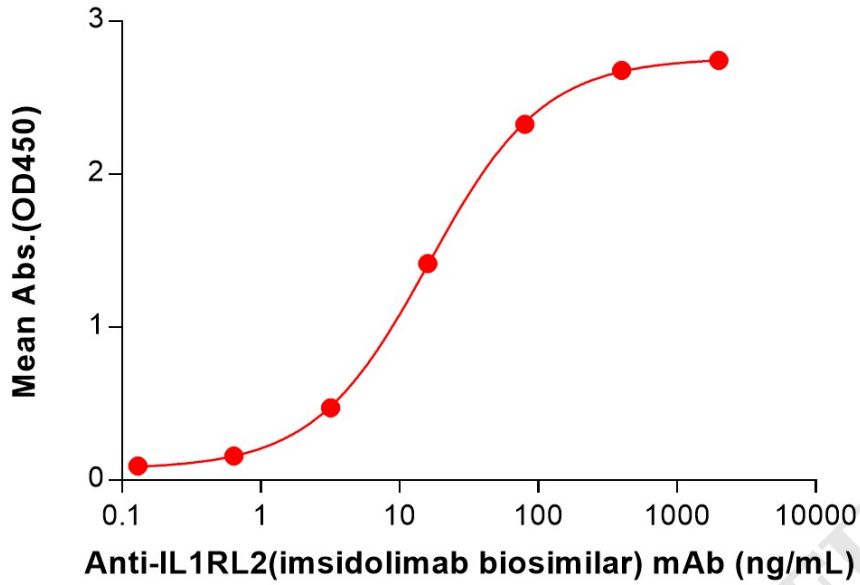


Figure 3. ELISA plate pre-coated by 2  $\mu$ g/mL (100  $\mu$ L/well) Human IL1RL2 Protein, His Tag (PME101318) can bind Anti-IL1RL2(imsidolimab biosimilar) mAb (BME100251) in a linear range of 3.20-400 ng/mL.

