

## PRODUCT INFORMATION

<b>Target</b>	IL5
<b>Synonyms</b>	IL-5;TRF;Interleukin-5;EDF
<b>Description</b>	Recombinant Human IL5 protein with C-terminal human Fc tag
<b>Delivery</b>	In Stock
<b>Uniprot ID</b>	P05113
<b>Expression Host</b>	HEK293
<b>Tag</b>	C-Human Fc Tag
<b>Molecular Characterization</b>	IL5(Ile20-Ser134) hFc(Glu99-Ala330)
<b>Molecular Weight</b>	The protein has a predicted molecular mass of 39.3 kDa after removal of the signal peptide. The apparent molecular mass of IL5-hFc is approximately 35-55 kDa due to glycosylation.
<b>Purity</b>	The purity of the protein is greater than 95% as determined by SDS-PAGE and Coomassie blue staining.
<b>Formulation &amp; Reconstitution</b>	Lyophilized from sterile PBS, pH 7.4. Normally 5% - 8% trehalose is added as protectants before lyophilization. Please see Certificate of Analysis for specific instructions of reconstitution.
<b>Storage &amp; Shipping</b>	Store at -20°C to -80°C for 12 months in lyophilized form. After reconstitution, if not intended for use within a month, aliquot and store at -80°C (Avoid repeated freezing and thawing). Lyophilized proteins are shipped at ambient temperature.
<b>Background</b>	This gene encodes a cytokine that acts as a growth and differentiation factor for both B cells and eosinophils. The encoded cytokine plays a major role in the regulation of eosinophil formation, maturation, recruitment and survival. The increased production of this cytokine may be related to pathogenesis of eosinophil-dependent inflammatory diseases. This cytokine functions by binding to its receptor, which is a heterodimer, whose beta subunit is shared with the receptors for interleukine 3 (IL3) and colony stimulating factor 2 (CSF2/GM-CSF). This gene is located on chromosome 5 within a cytokine gene cluster which includes interleukin 4 (IL4), interleukin 13 (IL13), and CSF2 . This gene, IL4, and IL13 may be regulated coordinately by long-range regulatory elements spread over 120 kilobases on chromosome 5q31.
<b>Usage</b>	Research use only
<b>Conjugate</b>	Unconjugated



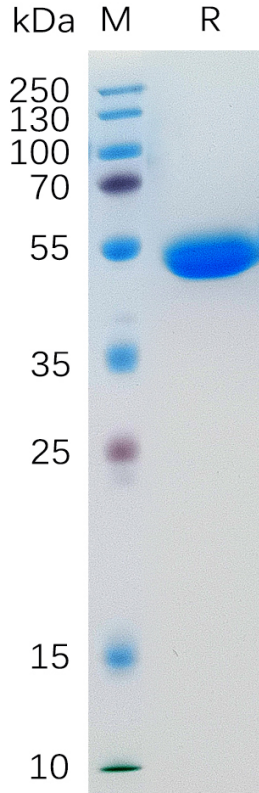


Figure 1. Human IL5 Protein, hFc Tag on SDS-PAGE under reducing condition.

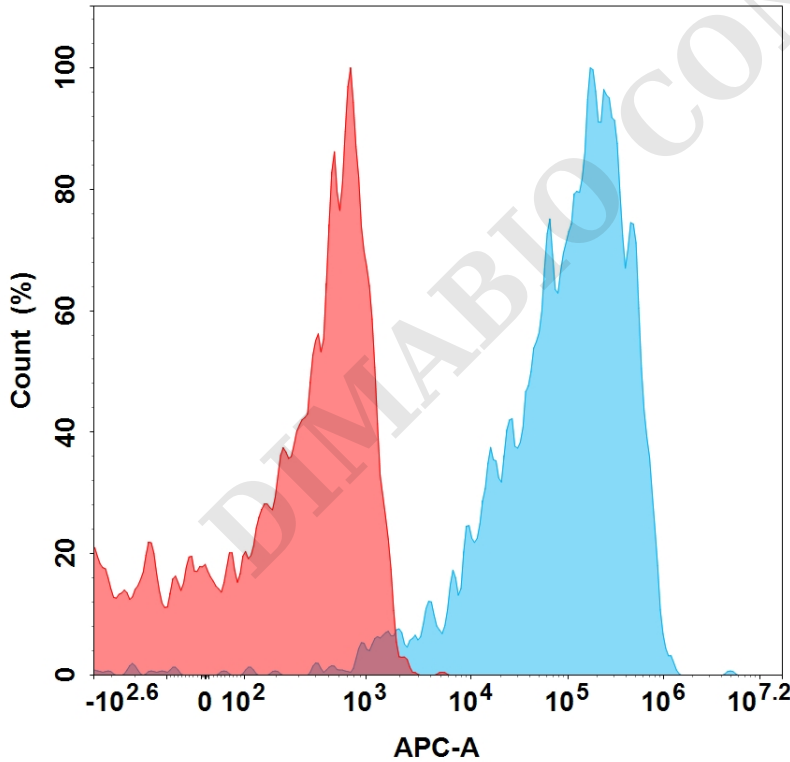


Figure 2. Flow cytometry analysis with 15  $\mu\text{g}/\text{mL}$  Human IL5 Protein, hFc Tag (PME100537) on Expi293 cells transfected with Human IL5RA protein (Blue histogram) or Expi293 transfected with irrelevant protein (Red histogram).



### Human IL5,hFc Tagged protein ELISA

0.2  $\mu$ g of Human IL5, hFc tagged protein per well

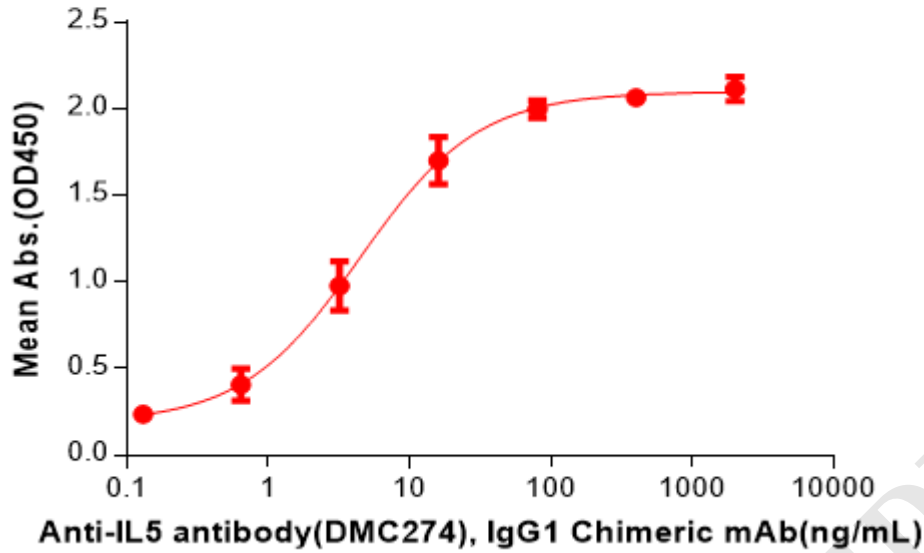


Figure 3. ELISA plate pre-coated by 2  $\mu$ g/mL (100  $\mu$ L/well) Human IL5 Protein, hFc Tag(PME100537) can bind Anti-IL5 antibody(DMC274), IgG1 Chimeric mAb in a linear range of 0.64-16 ng/mL.

DIMABIO CONFIDENTIAL

