

PRODUCT INFORMATION

Target	KIR2DL5A
Synonyms	CD158F, KIR2DL5, KIR2DL5.1, KIR2DL5.3
Description	Recombinant human KIR2DL5A Protein with C-terminal 6×His tag
Delivery	In Stock
Uniprot ID	Q8N109
Expression Host	HEK293
Tag	C-6×His tag
Molecular Characterization	KIR2DL5A(His22-His238) 6×His tag
Molecular Weight	The protein has a predicted molecular mass of 24.1 kDa after removal of the signal peptide.
Purity	The purity of the protein is greater than 85% as determined by SDS-PAGE and Coomassie blue staining.
Formulation & Reconstitution	Lyophilized from sterile PBS, pH 7.4. Normally 5% - 8% trehalose is added as protectants before lyophilization. Please see Certificate of Analysis for specific instructions of reconstitution.
Yefei_Storage	Store at -20°C to -80°C for 12 months in lyophilized form. After reconstitution, if not intended for use within a month, aliquot and store at -80°C (Avoid repeated freezing and thawing). Lyophilized proteins are shipped at ambient temperature.
Background	Killer cell immunoglobulin-like receptors (KIRs) are transmembrane glycoproteins expressed by natural killer cells and subsets of T cells. The KIR genes are polymorphic and highly homologous and they are found in a cluster on chromosome 19q13.4 within the 1 Mb leukocyte receptor complex (LRC). The gene content of the KIR gene cluster varies among haplotypes, although several "framework" genes are found in all haplotypes (KIR3DL3, KIR3DP1, KIR3DL4, KIR3DL2). The KIR proteins are classified by the number of extracellular immunoglobulin domains (2D or 3D) and by whether they have a long (L) or short (S) cytoplasmic domain. KIR proteins with the long cytoplasmic domain transduce inhibitory signals upon ligand binding via an immune tyrosine-based inhibitory motif (ITIM), while KIR proteins with the short cytoplasmic domain lack the ITIM motif and instead associate with the TYRO protein tyrosine kinase binding protein to transduce activating signals. The ligands for several KIR proteins are subsets of HLA class I molecules; thus, KIR proteins are thought to play an important role in regulation of the immune response. [provided by RefSeq, Jul 2008]
Usage	Research use only
Conjugate	Unconjugated



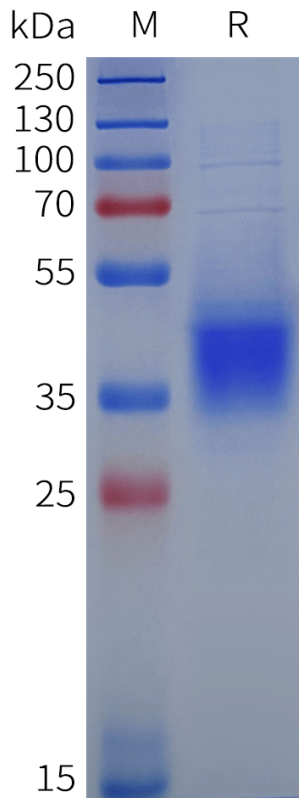


Figure 1. Human KIR2DL5A Protein, His Tag on SDS-PAGE under reducing condition.

DIMABIO CONFIDENTIAL

