

PRODUCT INFORMATION

| | |
|---|--|
| Target | LILRB2 |
| Synonyms | LIR-2;ILT-4;MIR-10;CD85d |
| Description | Recombinant human LILRB2 protein with C-terminal 6×His tag |
| Delivery | In Stock |
| Uniprot ID | Q8N423 |
| Expression Host | HEK293 |
| Tag | C-6×His Tag |
| Molecular Characterization | LILRB2(Gln22-Val461) 6×His tag |
| Molecular Weight | The protein has a predicted molecular mass of 48.6 kDa after removal of the signal peptide. The apparent molecular mass of LILRB2-His is approximately 55-70kDa due to glycosylation. |
| Purity | The purity of the protein is greater than 85% as determined by SDS-PAGE and Coomassie blue staining. |
| Formulation & Reconstitution | Lyophilized from sterile PBS, pH 7.4. Normally 5% - 8% trehalose is added as protectants before lyophilization. Please see Certificate of Analysis for specific instructions of reconstitution. |
| Storage & Shipping | Store at -20°C to -80°C for 12 months in lyophilized form. After reconstitution, if not intended for use within a month, aliquot and store at -80°C (Avoid repeated freezing and thawing). Lyophilized proteins are shipped at ambient temperature. |
| Background | This gene is a member of the leukocyte immunoglobulin-like receptor (LIR) family, which is found in a gene cluster at chromosomal region 19q13.4. The encoded protein belongs to the subfamily B class of LIR receptors which contain two or four extracellular immunoglobulin domains, a transmembrane domain, and two to four cytoplasmic immunoreceptor tyrosine-based inhibitory motifs (ITIMs). The receptor is expressed on immune cells where it binds to MHC class I molecules on antigen-presenting cells and transduces a negative signal that inhibits stimulation of an immune response. It is thought to control inflammatory responses and cytotoxicity to help focus the immune response and limit autoreactivity. Multiple transcript variants encoding different isoforms have been found for this gene. [provided by RefSeq, Jul 2008] |
| Usage | Research use only |
| Conjugate | Unconjugated |



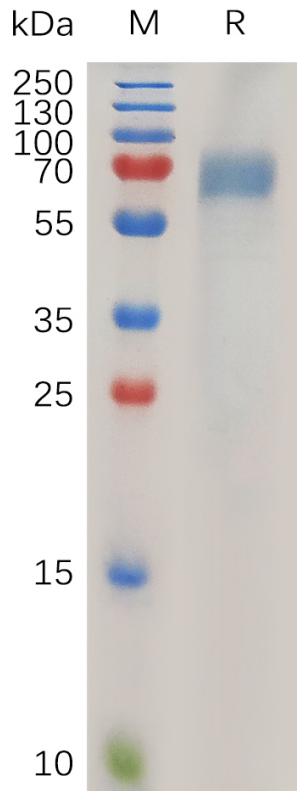


Figure 1. Human LILRB2 Protein, His Tag on SDS-PAGE under reducing condition.

Human LILRB2, His Tagged protein ELISA

0.2 μ g of Human LILRB2, His tagged protein per well

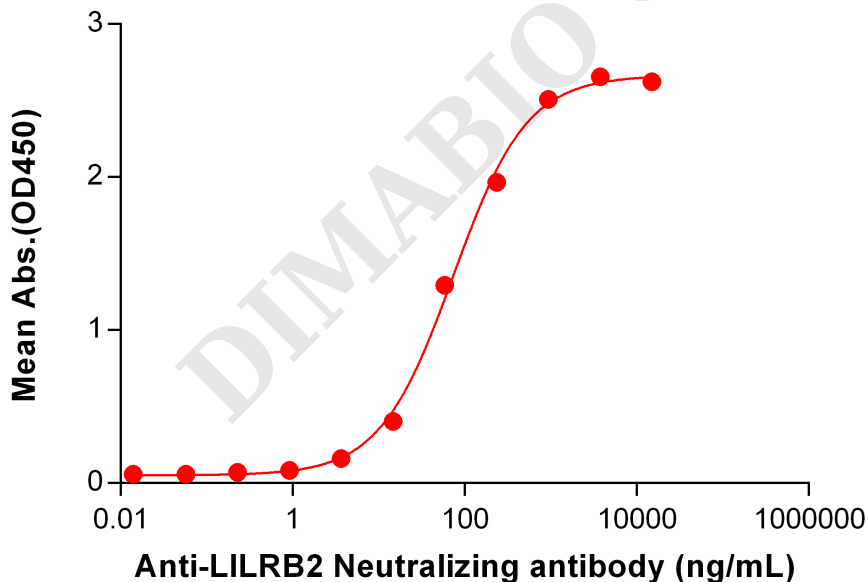


Figure 2. ELISA plate pre-coated by 2 μ g/mL (100 μ L/well) Human LILRB2 Protein, His Tag (PME100745) can bind Anti-LILRB2 Neutralizing antibody BME100145 in a linear range of 3.66–937.50 ng/mL.

