

PRODUCT INFORMATION

| | |
|---|--|
| Target | MST1R |
| Synonyms | CD136;CDw136;NPCA3;PTK8;RON |
| Description | Recombinant Human MST1R Protein with C-terminal Human Fc tag |
| Delivery | In Stock |
| Uniprot ID | Q04912 |
| Expression Host | HEK293 |
| Tag | C-Human Fc Tag |
| Molecular Characterization | MST1R(Glu25-Thr957) hFc(Glu99-Ala330) |
| Molecular Weight | The protein has a predicted molecular mass of 125.9 kDa after removal of the signal peptide. The apparent molecular mass of MST1R-hFc is approximately 130-250 kDa due to glycosylation. |
| Purity | The purity of the protein is greater than 95% as determined by SDS-PAGE and Coomassie blue staining. |
| Formulation & Reconstitution | Lyophilized from sterile PBS, pH 7.4. Normally 5% - 8% trehalose is added as protectants before lyophilization. Please see Certificate of Analysis for specific instructions of reconstitution. |
| Yefei_Storage | Store at -20°C to -80°C for 12 months in lyophilized form. After reconstitution, if not intended for use within a month, aliquot and store at -80°C (Avoid repeated freezing and thawing). Lyophilized proteins are shipped at ambient temperature. |
| Background | This gene encodes a cell surface receptor for macrophage-stimulating protein (MSP) with tyrosine kinase activity. The mature form of this protein is a heterodimer of disulfide-linked alpha and beta subunits, generated by proteolytic cleavage of a single-chain precursor. The beta subunit undergoes tyrosine phosphorylation upon stimulation by MSP. This protein is expressed on the ciliated epithelia of the mucociliary transport apparatus of the lung, and together with MSP, thought to be involved in host defense. Alternative splicing generates multiple transcript variants encoding different isoforms that may undergo similar proteolytic processing. [provided by RefSeq, Jan 2016] |
| Usage | Research use only |
| Conjugate | Unconjugated |



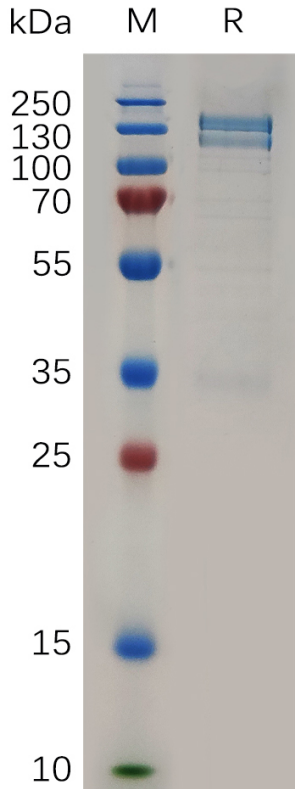


Figure 1. Human MST1R Protein, hFc Tag on SDS-PAGE under reducing condition.

Human MST1R, hFc Tagged protein ELISA

0.2 μ g of Human MST1R, hFc tagged protein per well

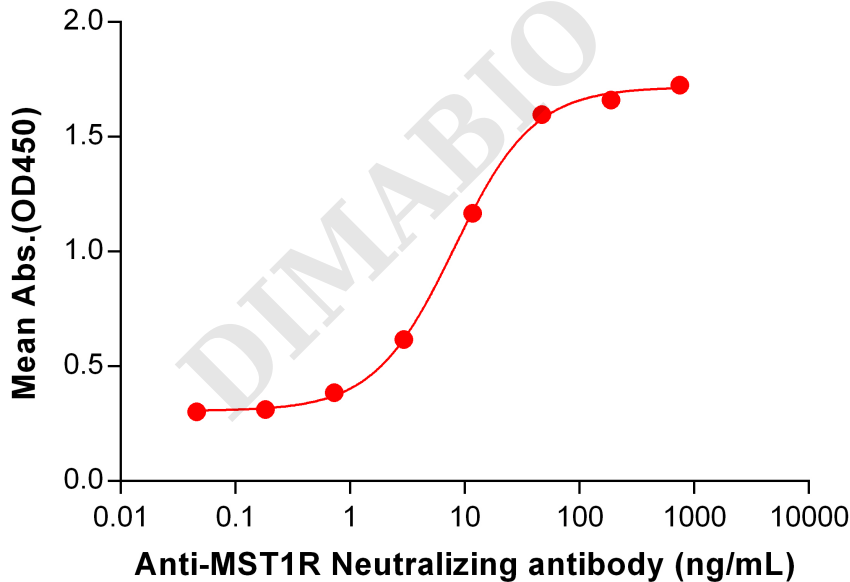


Figure 2. ELISA plate pre-coated by 2 μ g/mL (100 μ L/well) Human MST1R Protein, hFc Tag (PME100821) can bind Anti-MST1R Neutralizing antibody BME100118 in a linear range of 0.73-46.88 ng/mL.

