

PRODUCT INFORMATION

Target	PEDF
Synonyms	OI6; OI12; SERPINF1; EPC-1; PIG35
Description	Recombinant human PEDF Protein with C-terminal 6×His tag
Delivery	In Stock
Uniprot ID	P36955
Expression Host	HEK293
Tag	C-6×His tag
Molecular Characterization	PEDF(Gln20-Pro418) 6×His tag
Molecular Weight	The protein has a predicted molecular mass of 45.2 kDa after removal of the signal peptide. The apparent molecular mass of PEDF-His is approximately 35-55 kDa due to glycosylation.
Purity	The purity of the protein is greater than 85% as determined by SDS-PAGE and Coomassie blue staining.
Formulation & Reconstitution	Lyophilized from sterile PBS, pH 7.4. Normally 5% - 8% trehalose is added as protectants before lyophilization. Please see Certificate of Analysis for specific instructions of reconstitution.
Storage & Shipping	Store at -20°C to -80°C for 12 months in lyophilized form. After reconstitution, if not intended for use within a month, aliquot and store at -80°C (Avoid repeated freezing and thawing). Lyophilized proteins are shipped at ambient temperature.
Background	This gene encodes a member of the serpin family that does not display the serine protease inhibitory activity shown by many of the other serpin proteins. The encoded protein is secreted and strongly inhibits angiogenesis. In addition, this protein is a neurotrophic factor involved in neuronal differentiation in retinoblastoma cells. Mutations in this gene were found in individuals with osteogenesis imperfecta, type VI. [provided by RefSeq, Aug 2016]
Usage	Research use only
Conjugate	Unconjugated



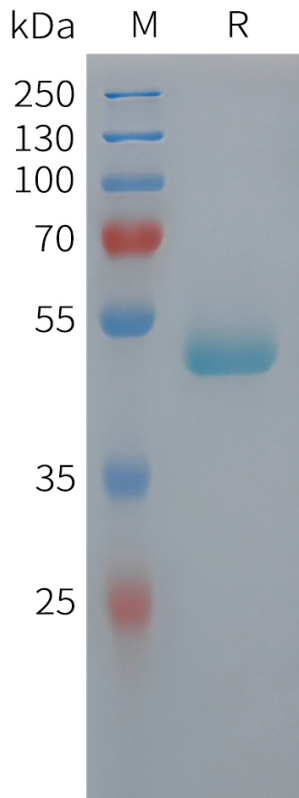


Figure 1. Human PEDF Protein, His Tag on SDS-PAGE under reducing condition.

DIMABIO CONFIDENTIAL

