

PRODUCT INFORMATION

Target	PRLHR
Synonyms	GR3; GPR10; PrRPR
Description	Recombinant human PRLHR Protein with C-terminal human Fc tag
Delivery	In Stock
Uniprot ID	P49683
Expression Host	HEK293
Tag	C-Human Fc tag
Molecular Characterization	PRLHR(Met1-Lys60) hFc(Glu99-Ala330)
Molecular Weight	The protein has a predicted molecular mass of 32.1 kDa after removal of the signal peptide.
Purity	The purity of the protein is greater than 90% as determined by SDS-PAGE and Coomassie blue staining.
Formulation & Reconstitution	Lyophilized from sterile PBS, pH 7.4. Normally 5% - 8% trehalose is added as protectants before lyophilization. Please see Certificate of Analysis for specific instructions of reconstitution.
Storage & Shipping	Store at -20°C to -80°C for 12 months in lyophilized form. After reconstitution, if not intended for use within a month, aliquot and store at -80°C (Avoid repeated freezing and thawing). Lyophilized proteins are shipped at ambient temperature.
Background	Predicted to enable neuropeptide binding activity and neuropeptide receptor activity. Predicted to be involved in G protein-coupled receptor signaling pathway. Predicted to act upstream of or within feeding behavior and hormone metabolic process. Located in cilium. Implicated in hypertension. [provided by Alliance of Genome Resources, Nov 2024]
Usage	Research use only
Conjugate	Unconjugated



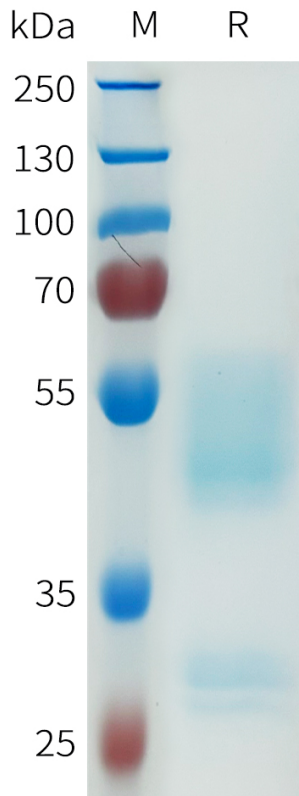


Figure 1. Human PRLHR Protein, hFc Tag on SDS-PAGE under reducing condition.

DIMABIO CONFIDENTIAL

