

PRODUCT INFORMATION

Target	PRLR
Synonyms	Prolactin receptor;PRL-R
Description	Recombinant human PRLR protein with C-terminal human Fc tag
Delivery	In Stock
Uniprot ID	P16471
Expression Host	HEK293
Tag	C-Human Fc Tag
Molecular Characterization	PRLR(Gln25-Asp234) hFc(Glu99-Ala330)
Molecular Weight	The protein has a predicted molecular mass of 50.5 kDa after removal of the signal peptide. The apparent molecular mass of PRLR-hFc is approximately 55-70 kDa due to glycosylation.
Purity	The purity of the protein is greater than 95% as determined by SDS-PAGE and Coomassie blue staining.
Formulation & Reconstitution	Lyophilized from sterile PBS, pH 7.4. Normally 5% - 8% trehalose is added as protectants before lyophilization. Please see Certificate of Analysis for specific instructions of reconstitution.
Storage & Shipping	Store at -20°C to -80°C for 12 months in lyophilized form. After reconstitution, if not intended for use within a month, aliquot and store at -80°C (Avoid repeated freezing and thawing). Lyophilized proteins are shipped at ambient temperature.
Background	This gene encodes a receptor for the anterior pituitary hormone, prolactin, and belongs to the type I cytokine receptor family. Prolactin-dependent signaling occurs as the result of ligand-induced dimerization of the prolactin receptor. Several alternatively spliced transcript variants encoding different membrane-bound and soluble isoforms have been described for this gene, which may function to modulate the endocrine and autocrine effects of prolactin in normal tissue and cancer. [provided by RefSeq, Feb 2011]
Usage	Research use only
Conjugate	Unconjugated



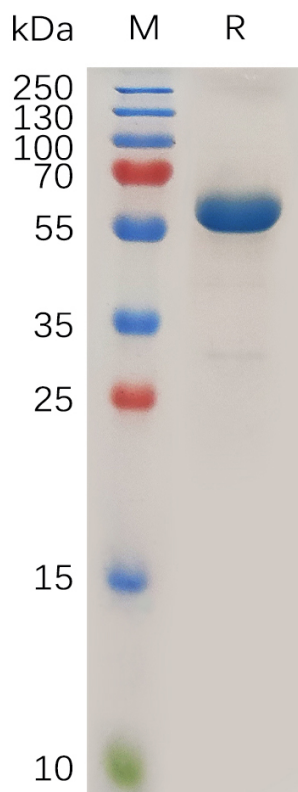


Figure 1. Human PRLR Protein, hFc Tag on SDS-PAGE under reducing condition.

DIMABIO CONFIDENTIAL

