

PRODUCT INFORMATION

Target	PTH1R
Synonyms	PFE; EKNS; PTHR; PTHR1
Description	Recombinant human PTH1R Protein with C-terminal human Fc tag
Delivery	In Stock
Uniprot ID	Q03431
Expression Host	HEK293
Tag	C-Human Fc tag
Molecular Characterization	PTH1R(Asp27-Gly188) hFc(Glu99-Ala330)
Molecular Weight	The protein has a predicted molecular mass of 44.8 kDa after removal of the signal peptide. The apparent molecular mass of PTH1R-hFc is approximately 55-70 kDa due to glycosylation.
Purity	The purity of the protein is greater than 95% as determined by SDS-PAGE and Coomassie blue staining.
Formulation & Reconstitution	Lyophilized from sterile PBS, pH 7.4. Normally 5% - 8% trehalose is added as protectants before lyophilization. Please see Certificate of Analysis for specific instructions of reconstitution.
Storage & Shipping	Store at -20°C to -80°C for 12 months in lyophilized form. After reconstitution, if not intended for use within a month, aliquot and store at -80°C (Avoid repeated freezing and thawing). Lyophilized proteins are shipped at ambient temperature.
Background	The protein encoded by this gene is a member of the G-protein coupled receptor family 2. This protein is a receptor for parathyroid hormone (PTH) and for parathyroid hormone-like hormone (PTHrP). The activity of this receptor is mediated by G proteins which activate adenylyl cyclase and also a phosphatidylinositol-calcium second messenger system. Defects in this receptor are known to be the cause of Jansen's metaphyseal chondrodysplasia (JMC), chondrodysplasia Blomstrand type (BOCD), as well as enchondromatosis. Two transcript variants encoding the same protein have been found for this gene. [provided by RefSeq, May 2010]
Usage	Research use only
Conjugate	Unconjugated



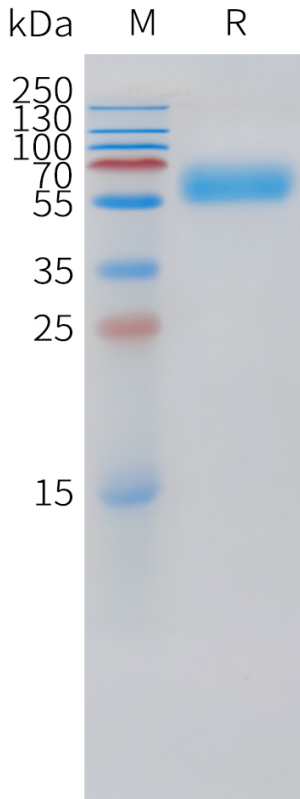


Figure 1. Human PTH1R Protein, hFc Tag on SDS-PAGE under reducing condition.

DIMABIO CONFIDENTIAL

