

PRODUCT INFORMATION

Target	SCF
Synonyms	SF; MGF; SCF; SLF; DCUA; FPH2; FPHH; KL-1; Kitl; WS2F; SHEP7; DFNA69
Description	Recombinant human SCF Protein with C-terminal 10×His tag
Delivery	In Stock
Uniprot ID	P21583
Expression Host	HEK293
Tag	C-10×His tag
Molecular Characterization	SCF(Glu26-His214) 10×His tag
Molecular Weight	The protein has a predicted molecular mass of 22.4.0 kDa after removal of the signal peptide.
Purity	The purity of the protein is greater than 85% as determined by SDS-PAGE and Coomassie blue staining.
Formulation & Reconstitution	Lyophilized from sterile PBS, pH 7.4. Normally 5 % - 8% trehalose is added as protectants before lyophilization. Please see Certificate of Analysis for specific instructions of reconstitution.
Yefei_Storage	Store at -20°C to -80°C for 12 months in lyophilized form. After reconstitution, if not intended for use within a month, aliquot and store at -80°C (Avoid repeated freezing and thawing). Lyophilized proteins are shipped at ambient temperature.
Background	This gene encodes the ligand of the tyrosine-kinase receptor encoded by the KIT locus. This ligand is a pleiotropic factor that acts in utero in germ cell and neural cell development, and hematopoiesis, all believed to reflect a role in cell migration. In adults, it functions pleiotropically, while mostly noted for its continued requirement in hematopoiesis. Two transcript variants encoding different isoforms have been found for this gene. [provided by RefSeq, Jul 2008]
Usage	Research use only
Conjugate	Unconjugated



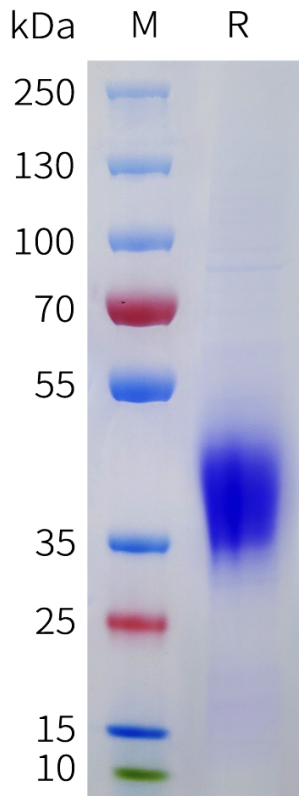


Figure 1. Human SCF Protein, His Tag on SDS-PAGE under reducing condition.

DIMABIO CONFIDENTIAL

