

PRODUCT INFORMATION

Target	SEZ6
Synonyms	BSRPC
Description	Recombinant Human SEZ6 Protein with C-terminal 6×His tag
Delivery	In Stock
Uniprot ID	Q53EL9
Expression Host	HEK293
Tag	C-6×His Tag
Molecular Characterization	SEZ6(Leu20-His925) 6×His tag
Molecular Weight	The protein has a predicted molecular mass of 98.6 kDa after removal of the signal peptide. The apparent molecular mass of SEZ6-His is approximately 130-250 kDa due to glycosylation.
Purity	The purity of the protein is greater than 85% as determined by SDS-PAGE and Coomassie blue staining.
Formulation & Reconstitution	Lyophilized from sterile PBS, pH 7.4. Normally 5 % - 8% trehalose is added as protectants before lyophilization. Please see Certificate of Analysis for specific instructions of reconstitution.
Yefei_Storage	Store at -20°C to -80°C for 12 months in lyophilized form. After reconstitution, if not intended for use within a month, aliquot and store at -80°C (Avoid repeated freezing and thawing). Lyophilized proteins are shipped at ambient temperature.
Background	The protein encoded by this gene is thought to contain five cysteine-rich motifs that are similar to sushi domains, as well as two domains similar to the amino terminal half of the CUB (for complement C1r/C1s, Uegf, Bmp1) domain. Mutations in this gene have been associated with febrile seizures. [provided by RefSeq, Jul 2016]
Usage	Research use only
Conjugate	Unconjugated



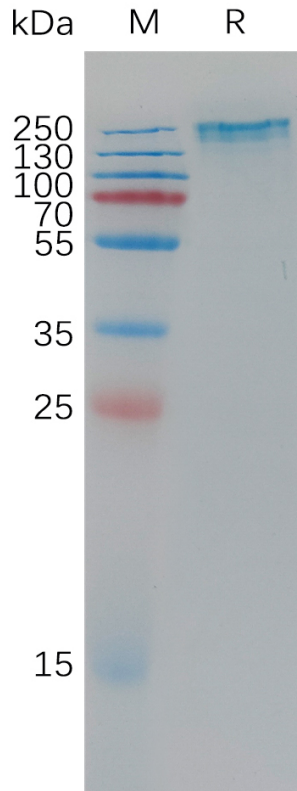


Figure 1. Human SEZ6 Protein, His Tag on SDS-PAGE under reducing condition.

Human SEZ6, His Tagged protein ELISA

0.2 µg of Human SEZ6, His tagged protein per well

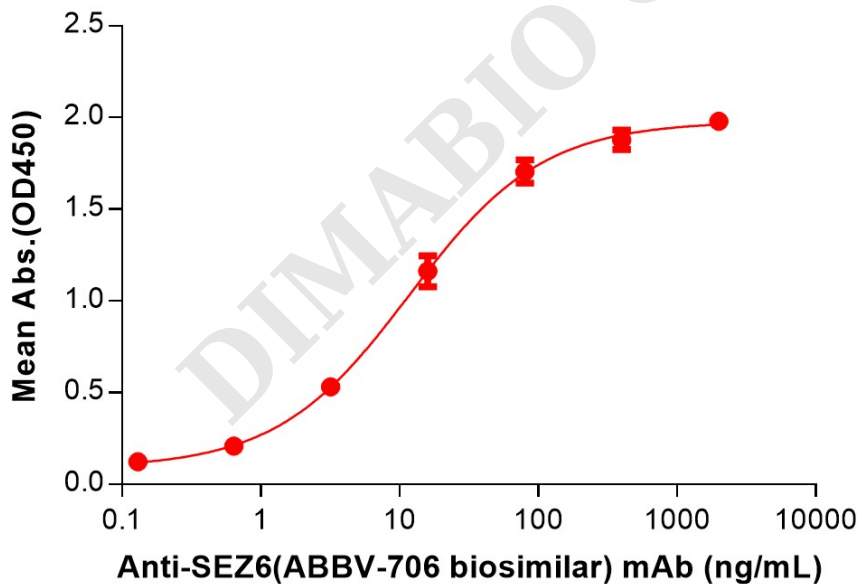


Figure 2. ELISA plate pre-coated by 2 µg/mL (100 µL/well) Human SEZ6 Protein, His Tag (PME101194) can bind Anti-SEZ6(ABBV-706 biosimilar) mAb (BME100275) in a linear range of 0.64–80 ng/mL.



Human SEZ6, His Tagged Protein ELISA

0.2 μ g of Human SEZ6, His tagged protein per well

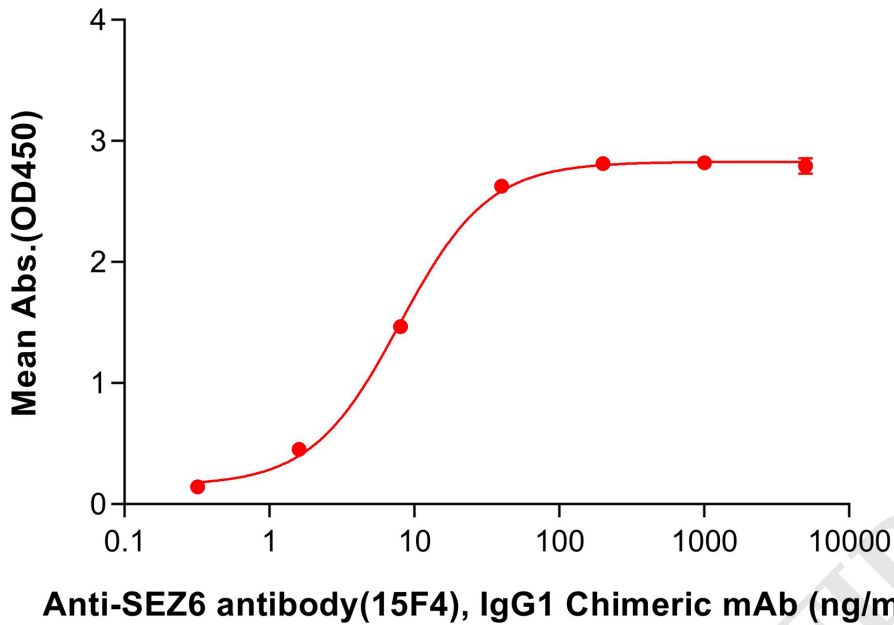


Figure 3. ELISA plate pre-coated by 2 μ g/mL (100 μ L/well) Human SEZ6 Protein, His Tag(PME101194) can bind Anti-SEZ6 antibody(15F4), IgG1 Chimeric mAb(DMC101338) in a linear range of 1.6-8.0 ng/mL.

