

PRODUCT INFORMATION

| | |
|---|---|
| Target | SEZ6 |
| Synonyms | BSRPC |
| Description | Recombinant human SEZ6(768-835) Protein with C-terminal human Fc tag |
| Delivery | In Stock |
| Uniprot ID | Q53EL9 |
| Expression Host | HEK293 |
| Tag | C-Human Fc tag |
| Molecular Characterization | SEZ6(Val768-Leu835) hFc(Glu99-Ala330) |
| Molecular Weight | The protein has a predicted molecular mass of 33.6 kDa after removal of the signal peptide. The apparent molecular mass of SEZ6(768-835)-hFc is approximately 35-55 kDa due to glycosylation. |
| Purity | The purity of the protein is greater than 95% as determined by SDS-PAGE and Coomassie blue staining. |
| Formulation & Reconstitution | Lyophilized from sterile PBS, pH 7.4. Normally 5 % - 8% trehalose is added as protectants before lyophilization. Please see Certificate of Analysis for specific instructions of reconstitution. |
| Yefei_Storage | Store at -20°C to -80°C for 12 months in lyophilized form. After reconstitution, if not intended for use within a month, aliquot and store at -80°C (Avoid repeated freezing and thawing). Lyophilized proteins are shipped at ambient temperature. |
| Background | The protein encoded by this gene is thought to contain five cysteine-rich motifs that are similar to sushi domains, as well as two domains similar to the amino terminal half of the CUB (for complement C1r/C1s, Uegf, Bmp1) domain. Mutations in this gene have been associated with febrile seizures. [provided by RefSeq, Jul 2016] |
| Usage | Research use only |
| Conjugate | Unconjugated |



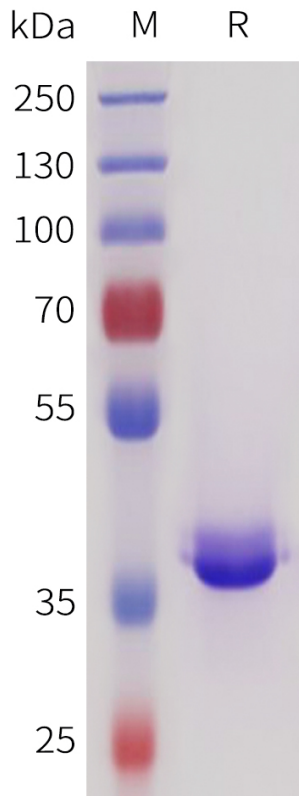


Figure 1. Human SEZ6(768-835) Protein, hFc Tag on SDS-PAGE under reducing condition.

DIMABIO CONFIDENTIAL

