

PRODUCT INFORMATION

Target	SIGLEC15
Synonyms	CD33 antigen-like 3;SIGLEC-15;CD33L3;sialic acid-binding Ig-like lectin 15;Siglec15;Siglec-15
Description	Recombinant human SIGLEC15 protein with C-terminal mouse Fc and 6×His tag
Delivery	In Stock
Uniprot ID	Q6ZMC9
Expression Host	HEK293
Tag	C-Mouse Fc and 6×His Tag
Molecular Characterization	SIGLEC15(Phe20-Thr263) mFc(Pro99-Lys330) 6×His tag
Molecular Weight	The protein has a predicted molecular mass of 53.6 kDa after removal of the signal peptide. The apparent molecular mass of SIGLEC15-mFc-His is approximately 55-70 kDa due to glycosylation.
Purity	The purity of the protein is greater than 95% as determined by SDS-PAGE and Coomassie blue staining.
Formulation & Reconstitution	Lyophilized from sterile PBS, pH 7.4. Normally 5 % - 8% trehalose is added as protectants before lyophilization. Please see Certificate of Analysis for specific instructions of reconstitution.
Storage & Shipping	Store at -20°C to -80°C for 12 months in lyophilized form. After reconstitution, if not intended for use within a month, aliquot and store at -80°C (Avoid repeated freezing and thawing). Lyophilized proteins are shipped at ambient temperature.
Background	SIGLEC15 (Sialic Acid Binding Ig Like Lectin 15) is a Protein Coding gene. Diseases associated with SIGLEC15 include Osteoporosis;Juvenile and Osteoporosis. Among its related pathways are Innate Immune System and RET signaling. An important paralog of this gene is SIGLEC1.
Usage	Research use only
Conjugate	Unconjugated



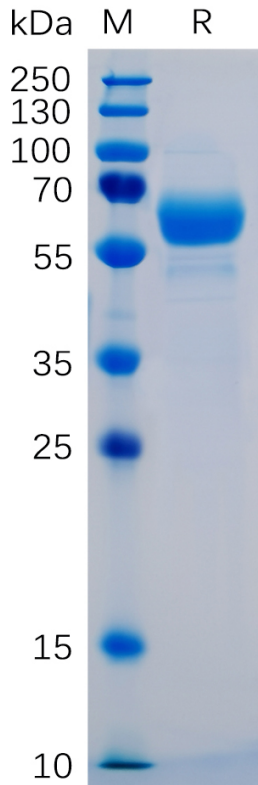


Figure 1. Human SIGLEC15 Protein, mFc-His Tag on SDS-PAGE under reducing condition.

DIMABIO CONFIDENTIAL

