

PRODUCT INFORMATION

Target	TGFB1
Synonyms	CED; LAP; DPD1; TGFB; IBDIMDE; TGFbeta; TGF-beta1
Description	Recombinant human TGFB1(30-390) Protein with C-terminal 10×His tag
Delivery	In Stock
Uniprot ID	P01137
Expression Host	HEK293
Tag	C-10×His tag
Molecular Characterization	TGFB1(Leu30-Ser390) 10×His tag
Molecular Weight	The protein has a predicted molecular mass of 42.6 kDa after removal of the signal peptide.
Purity	The purity of the protein is greater than 80% as determined by SDS-PAGE and Coomassie blue staining.
Formulation & Reconstitution	Lyophilized from sterile PBS, pH 7.4. Normally 5 % - 8% trehalose is added as protectants before lyophilization. Please see Certificate of Analysis for specific instructions of reconstitution.
Storage & Shipping	Store at -20°C to -80°C for 12 months in lyophilized form. After reconstitution, if not intended for use within a month, aliquot and store at -80°C (Avoid repeated freezing and thawing). Lyophilized proteins are shipped at ambient temperature.
Background	This gene encodes a secreted ligand of the TGF-beta (transforming growth factor-beta) superfamily of proteins. Ligands of this family bind various TGF-beta receptors leading to recruitment and activation of SMAD family transcription factors that regulate gene expression. The encoded preproprotein is proteolytically processed to generate a latency-associated peptide (LAP) and a mature peptide, and is found in either a latent form composed of a mature peptide homodimer, a LAP homodimer, and a latent TGF-beta binding protein, or in an active form consisting solely of the mature peptide homodimer. The mature peptide may also form heterodimers with other TGFB family members. This encoded protein regulates cell proliferation, differentiation and growth, and can modulate expression and activation of other growth factors including interferon gamma and tumor necrosis factor alpha. This gene is frequently upregulated in tumor cells, and mutations in this gene result in Camurati-Engelmann disease. [provided by RefSeq, Aug 2016]
Usage	Research use only
Conjugate	Unconjugated



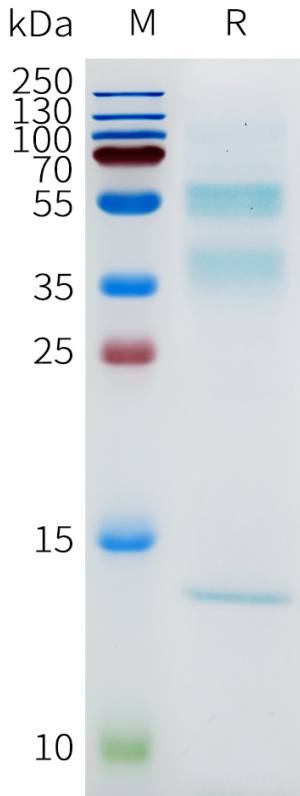


Figure 1. Human TGFB1(30-390) Protein, His Tag on SDS-PAGE under reducing condition.

Human TGFB1(30-390), His Tagged protein ELISA

0.2 µg of Human TGFB1(30-390), His tagged protein per well

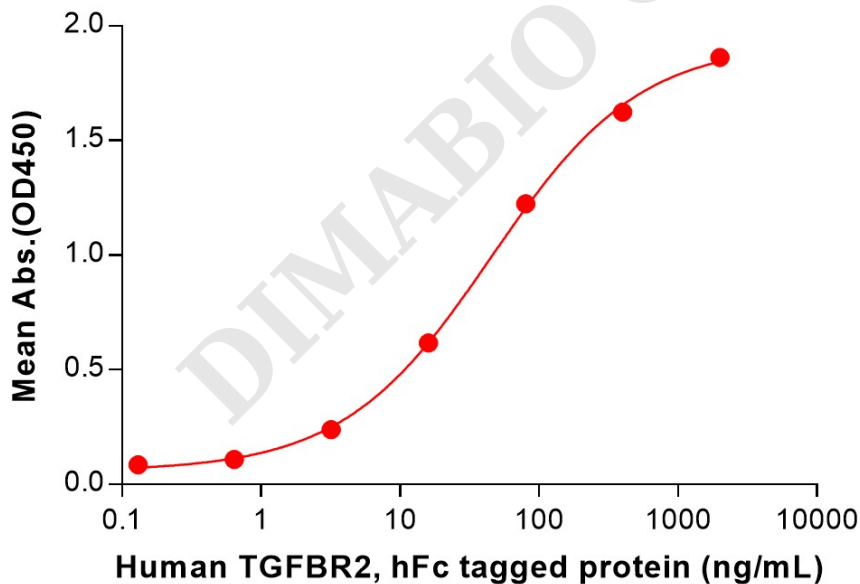


Figure 2. ELISA plate pre-coated by 2 µg/mL (100 µL/well) Human TGFB1(30-390) Protein, His Tag (PME101649) can bind Human TGFB1(30-390) Protein, hFc Tag (PME101017) in a linear range of 3.20-400 ng/mL.

