

PRODUCT INFORMATION

Target	B7H2, B7H6, BAFF-R, CD10, CD19, CD205, CD21, CD22, CD23, CD27, CD40, CD48, CD70, CD74, CD79B, CXCR5, ICAM-1, NTB-A, PVRIG
Description	The embedded and sliced tumor sections (4µm section) from M-NSG mice implanted with RAJI cells
Host Cells	RAJI
Applications	IHC
Host mice	M-NSG
Delivery	1 week
Guarantee	36 months from the date of manufacture
Background	These carefully prepared tissue slides offer researchers standardized and high-quality samples for antibody testing. Utilizing tumor models derived from immunocompromised mice, researchers can confidently assess antibody specificity and sensitivity, driving advancements in cancer diagnostics and therapeutics.
Storage & Shipping	Room temperature
Usage	Research use only

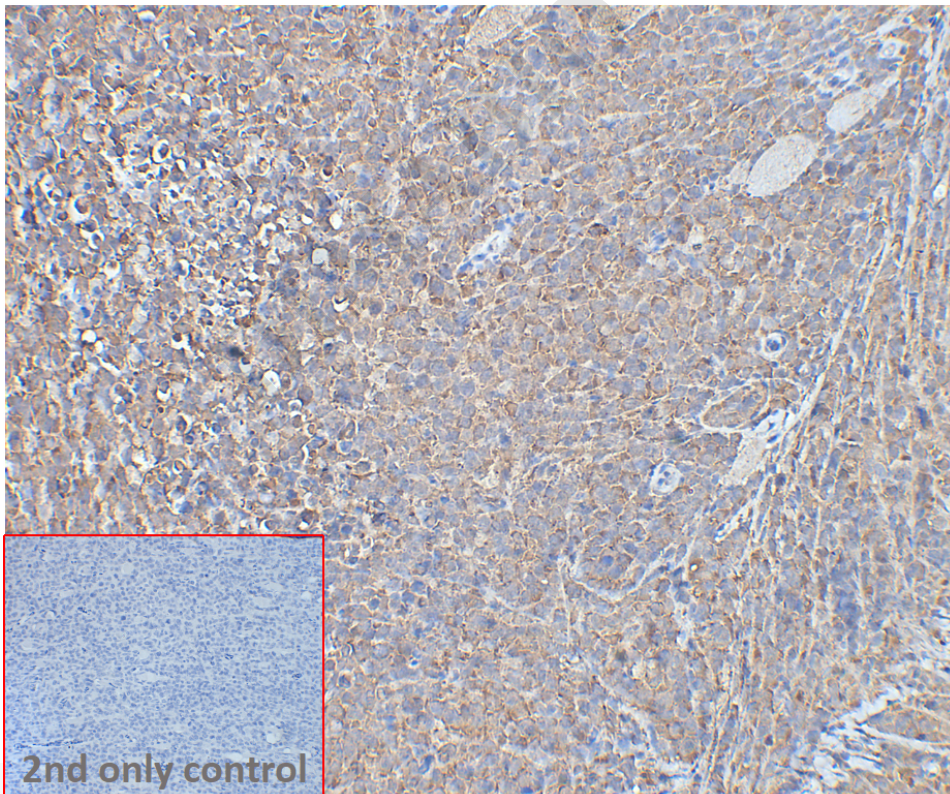


Figure 1. IHC analysis of M-NSG RAJI DiSliceX™ SlideSet section (Cat. No. SLI100013) with Anti-BAFF-R Antibody (DME143) Rabbit mAb (Cat. No. DME10014) at a concentration of 10 µg/ml. The inset image shows the 2nd only control.

Address: (DME143) Rabbit mAb
 Biotechnology B7, Biolake No.666
 Gaoxin Road, Wuhan, Hubei, China
 Telephone: +1 2409940618(USA)
 /+86-18062749453(China)
 /+86-400-006-0995(China)

Email: info@dimabio.com
 Website: www.dimabio.com



staining in secondary antibody-only control.

DIMABIO CONFIDENTIAL

