

**PRODUCT INFORMATION**

<b>Target</b>	BCMA, BTN3A1, CD138, CD147, CD30, CD33, CD38, CD47, CD63, CD99, CS1, GITR, GPC1, GPRC5D, ICAM-1, MUC1, PDL-1, SELPLG, TFRC, TIM3
<b>Description</b>	The embedded and sliced tumor sections (4µm section) from M-NSG mice implanted with RPMI-8226 cells
<b>Host Cells</b>	RPMI 8226
<b>Applications</b>	IHC
<b>Host mice</b>	M-NSG
<b>Delivery</b>	1 week
<b>Guarantee</b>	36 months from the date of manufacture
<b>Background</b>	These carefully prepared tissue slides offer researchers standardized and high-quality samples for antibody testing. Utilizing tumor models derived from immunocompromised mice, researchers can confidently assess antibody specificity and sensitivity, driving advancements in cancer diagnostics and therapeutics.
<b>Yefei_Storage</b>	Room temperature
<b>Usage</b>	Research use only

CONFIDENTIAL

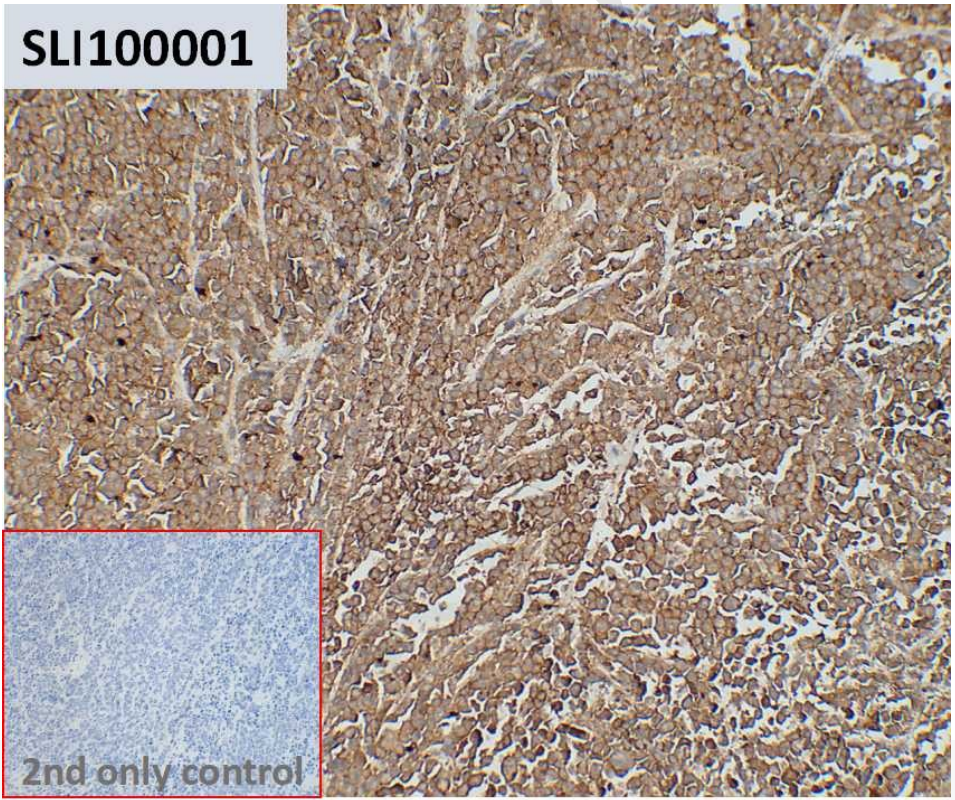


Figure 1: IHC analysis of M-NSG RPMI-8226 DiSliceX™ SlideSet section (Cat. No. SLI100001) with anti-CD99

Biotechnology B7, Biolake No.666  
 Gaoxin Road, Wuhan, Hubei, China  
 Telephone: +1 2409940618(USA)  
 /+86-18062749453(China)  
 /+86-400-006-0995(China)

Website: [www.dimabio.com](http://www.dimabio.com)



antibody(DM203); Rabbit mAb (Cat. No. DME100203) at a concentration of 10 µg/ml. The inset image shows the absence of staining in secondary antibody-only control.

DIMABIO CONFIDENTIAL

