

**PRODUCT INFORMATION**

<b>Target</b>	CCR8
<b>Synonyms</b>	CC-CKR-8;CCR-8;CDw198;CKRL1;CMKBR8;CMKBRL2;CY6;GPCRY6;TER1
<b>Description</b>	Recombinant mouse CCR8 protein with C-terminal human Fc tag
<b>Delivery</b>	In Stock
<b>Uniprot ID</b>	P56484
<b>Expression Host</b>	HEK293
<b>Tag</b>	C-Human Fc Tag
<b>Molecular Characterization</b>	Mouse CCR8(Met1-Met33) hFc(Glu99-Ala330)
<b>Molecular Weight</b>	The protein has a predicted molecular mass of 30.0 kDa after removal of the signal peptide. The apparent molecular mass of mCCR8-hFc is approximately 35-55 kDa due to glycosylation.
<b>Purity</b>	The purity of the protein is greater than 95% as determined by SDS-PAGE and Coomassie blue staining.
<b>Formulation &amp; Reconstitution</b>	Lyophilized from sterile PBS, pH 7.4. Normally 5% - 8% trehalose is added as protectants before lyophilization. Please see Certificate of Analysis for specific instructions of reconstitution.
<b>Yefei_Storage</b>	Store at -20°C to -80°C for 12 months in lyophilized form. After reconstitution, if not intended for use within a month, aliquot and store at -80°C (Avoid repeated freezing and thawing). Lyophilized proteins are shipped at ambient temperature.
<b>Background</b>	Receptor for the CCL1/SCY1/TCA-3 chemokine.[UniProtKB/Swiss-Prot Function]
<b>Usage</b>	Research use only
<b>Conjugate</b>	Unconjugated

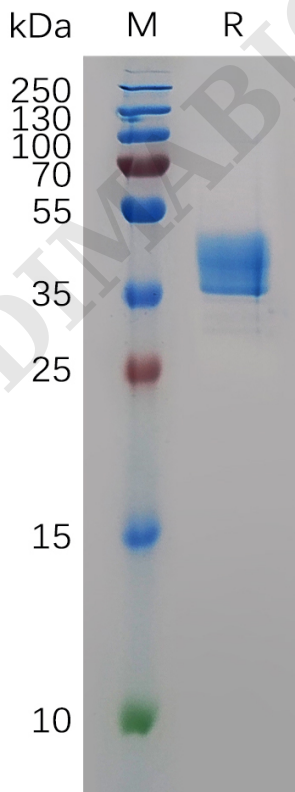


Figure 1. Mouse CCR8 Protein, hFc Tag on SDS-PAGE under reducing condition.  
 Address: Wuhan Institute of Biotechnology B7, Biolake No.666 Gaoxin Road, Wuhan, Hubei, China  
 Telephone: +1 2409940618(USA) /+86-18062749453(China) /+86-400-006-0995(China)  
 Email: info@dimabio.com Website: www.dimabio.com



## Mouse CCR8, hFc Tagged protein ELISA

0.2  $\mu$ g of Mouse CCR8, hFc tagged protein per well

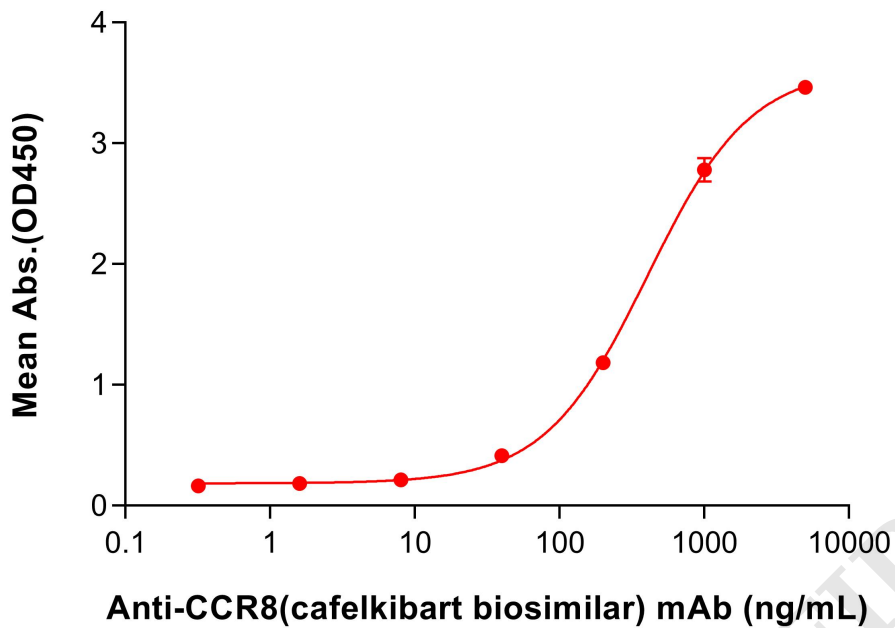


Figure 2. ELISA plate pre-coated by 2  $\mu$ g/mL (100  $\mu$ L/well) Mouse CCR8 Protein, hFc Tag (PME-M100034) can bind Anti-CCR8(cafekibart biosimilar) mAb (BME100445) in a linear range of 200–1000 ng/mL.

