

PRODUCT INFORMATION

Target	CDH6
Synonyms	CAD6
Description	Recombinant mouse CDH6 protein with C-terminal 10×His tag
Delivery	In Stock
Uniprot ID	P97326
Expression Host	HEK293
Tag	C-10×His tag
Molecular Characterization	Mouse CDH6(Thr19-Ala615) 10×His tag
Molecular Weight	The protein has a predicted molecular mass of 67.8 kDa after removal of the signal peptide. The apparent molecular mass of mCDH6-His is approximately 70-130 kDa due to glycosylation.
Purity	The purity of the protein is greater than 85% as determined by SDS-PAGE and Coomassie blue staining.
Formulation & Reconstitution	Lyophilized from sterile PBS, pH 7.4. Normally 5 % - 8% trehalose is added as protectants before lyophilization. Please see Certificate of Analysis for specific instructions of reconstitution.
Yefei_Storage	Store at -20°C to -80°C for 12 months in lyophilized form. After reconstitution, if not intended for use within a month, aliquot and store at -80°C (Avoid repeated freezing and thawing). Lyophilized proteins are shipped at ambient temperature.
Background	This gene encodes a member of the cadherin family of calcium-dependent glycoproteins that mediate cell adhesion and regulate many morphogenetic events during development. The encoded preproprotein is further processed to generate a mature protein. Mice lacking the encoded protein exhibit delay in mesenchyme-to-epithelial conversion and a loss of nephrons. Multiple distinct genes of the cadherin family, including this gene, are found on chromosome 15. [provided by RefSeq, Oct 2015]
Usage	Research use only
Conjugate	Unconjugated



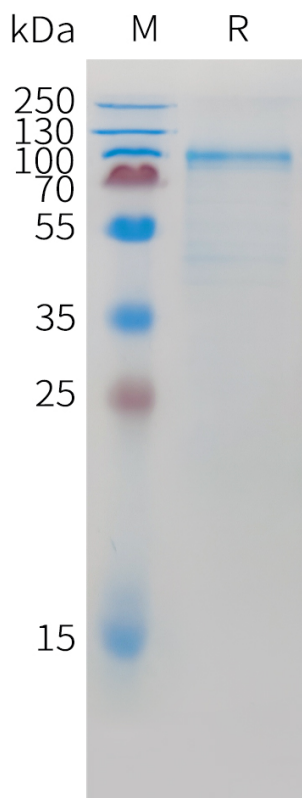


Figure 1. Mouse CDH6 Protein, His Tag on SDS-PAGE under reducing condition.

DIMABIO CONFIDENTIAL

