

## PRODUCT INFORMATION

<b>Target</b>	CXCR2
<b>Synonyms</b>	CD128; IL8RA; IL8rb; CDw128; Cmkar2; Gpcr16; IL-8Rh; IL-8rb; mL-8RH
<b>Description</b>	Recombinant Mouse CXCR2 Protein with C-terminal human Fc tag
<b>Delivery</b>	In Stock
<b>Uniprot ID</b>	P35343
<b>Expression Host</b>	HEK293
<b>Tag</b>	C-Human Fc tag
<b>Molecular Characterization</b>	Mouse CXCR2(Met1-Ile45) hFc(Glu99-Ala330)
<b>Molecular Weight</b>	The protein has a predicted molecular mass of 31.2 kDa after removal of the signal peptide.
<b>Purity</b>	The purity of the protein is greater than 95% as determined by SDS-PAGE and Coomassie blue staining.
<b>Formulation &amp; Reconstitution</b>	Lyophilized from sterile PBS, pH 7.4. Normally 5% - 8% trehalose is added as protectants before lyophilization. Please see Certificate of Analysis for specific instructions of reconstitution.
<b>Storage &amp; Shipping</b>	Store at -20°C to -80°C for 12 months in lyophilized form. After reconstitution, if not intended for use within a month, aliquot and store at -80°C (Avoid repeated freezing and thawing). Lyophilized proteins are shipped at ambient temperature.
<b>Background</b>	Enables chemokine receptor activity. Acts upstream of or within negative regulation of apoptotic process. Predicted to be located in several cellular components, including cell surface; mast cell granule; and mitotic spindle. Predicted to be active in external side of plasma membrane. Is expressed in several structures, including alimentary system; central nervous system; embryo mesenchyme; epithelium; and heart. Human ortholog(s) of this gene implicated in IgA glomerulonephritis; WHIM syndrome 2; acute pyelonephritis; end stage renal disease; and urinary bladder cancer. Orthologous to human CXCR2 (C-X-C motif chemokine receptor 2). [provided by Alliance of Genome Resources, May 2025]
<b>Usage</b>	Research use only
<b>Conjugate</b>	Unconjugated



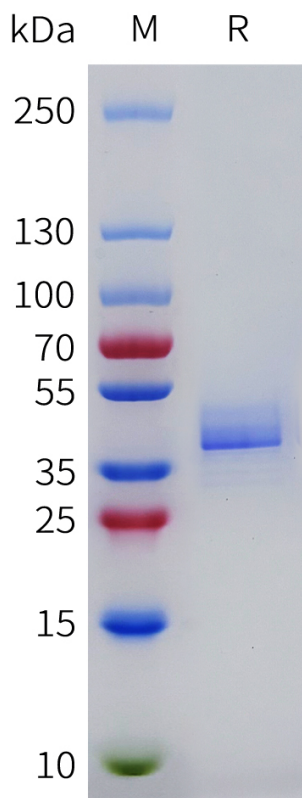


Figure 1. Mouse CXCR2 Protein, hFc Tag on SDS-PAGE under reducing condition.

DIMABIO CONFIDENTIAL

