

PRODUCT INFORMATION

Target	GPC3
Synonyms	OCI-5
Description	Recombinant mouse GPC3(510-559) protein with N-terminal human Fc tag
Delivery	In Stock
Uniprot ID	Q8CFZ4
Expression Host	HEK293
Tag	N-Human Fc tag
Molecular Characterization	hFc(Glu99-Ala330) Mouse GPC3(Asp510-Ser559)
Molecular Weight	The protein has a predicted molecular mass of 31.6 kDa after removal of the signal peptide. The apparent molecular mass of hFc-mGPC3(510-559) is approximately 25-55 kDa due to glycosylation.
Purity	The purity of the protein is greater than 90% as determined by SDS-PAGE and Coomassie blue staining.
Formulation & Reconstitution	Lyophilized from sterile PBS, pH 7.4. Normally 5% - 8% trehalose is added as protectants before lyophilization. Please see Certificate of Analysis for specific instructions of reconstitution.
Storage & Shipping	Store at -20°C to -80°C for 12 months in lyophilized form. After reconstitution, if not intended for use within a month, aliquot and store at -80°C (Avoid repeated freezing and thawing). Lyophilized proteins are shipped at ambient temperature.
Background	Predicted to enable peptidyl-dipeptidase inhibitor activity. Involved in mesenchymal cell proliferation involved in ureteric bud development. Acts upstream of or within several processes, including animal organ development; positive regulation of transport; and regulation of signal transduction. Located in lysosome and plasma membrane. Is anchored component of plasma membrane. Is expressed in several structures, including branchial arch; future brain; lower jaw; reproductive system; and urinary system. Used to study Simpson-Golabi-Behmel syndrome type 1. Human ortholog(s) of this gene implicated in Simpson-Golabi-Behmel syndrome type 1; hepatocellular carcinoma; and nephroblastoma. Orthologous to human GPC3 (glypican 3). [provided by Alliance of Genome Resources, Apr 2022]
Usage	Research use only
Conjugate	Unconjugated



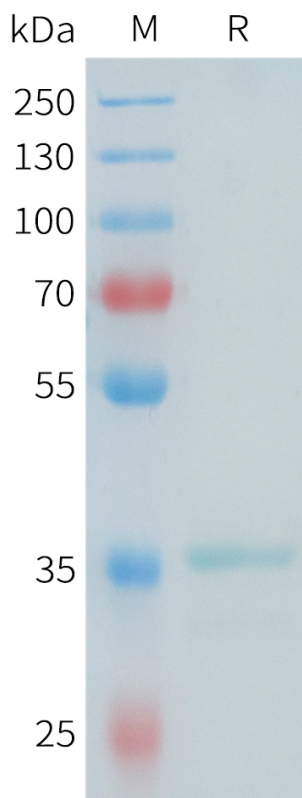


Figure 1. Mouse GPC3(510-559) Protein, hFc Tag on SDS-PAGE under reducing condition.

DIMABIO CONFIDENTIAL

