

### PRODUCT INFORMATION

<b>Common Name</b>	<b>Warning:</b> Undefined variable \$hasAttributeValueDescription in C:\wwwroot\mirror.dimabio.com\wp-content\plugins\woocommerce-print-products\public\class-woocommerce-print-products-public.php on line 2806 DS-6000A_DS6000A
<b>Conjugate</b>	PE-conjugated
<b>Synonyms</b>	CADH6;K-cadherin
<b>Applications</b>	Flow Cyt
<b>Recommended Dilutions</b>	Flow Cyt 1:350
<b>Formulation &amp; Reconstitution</b>	Liquid PBS with 0.05% Proclin300, 1% BSA
<b>Host Species</b>	Humanized
<b>IgG type</b>	IgG1(K97R)
<b>Reactivity</b>	Human
<b>Target</b>	CDH6
<b>Uniprot ID</b>	P55285
<b>Description</b>	PE-conjugated Anti-CDH6(raludotatug biosimilar) mAb
<b>Delivery</b>	In Stock
<b>Yefei_Storage</b>	Store at 2°C-8°C for 6 months
<b>Background</b>	Research grade biosimilar. Not for use in therapeutic or diagnostic procedures for humans or animals.
<b>Usage</b>	Research use only

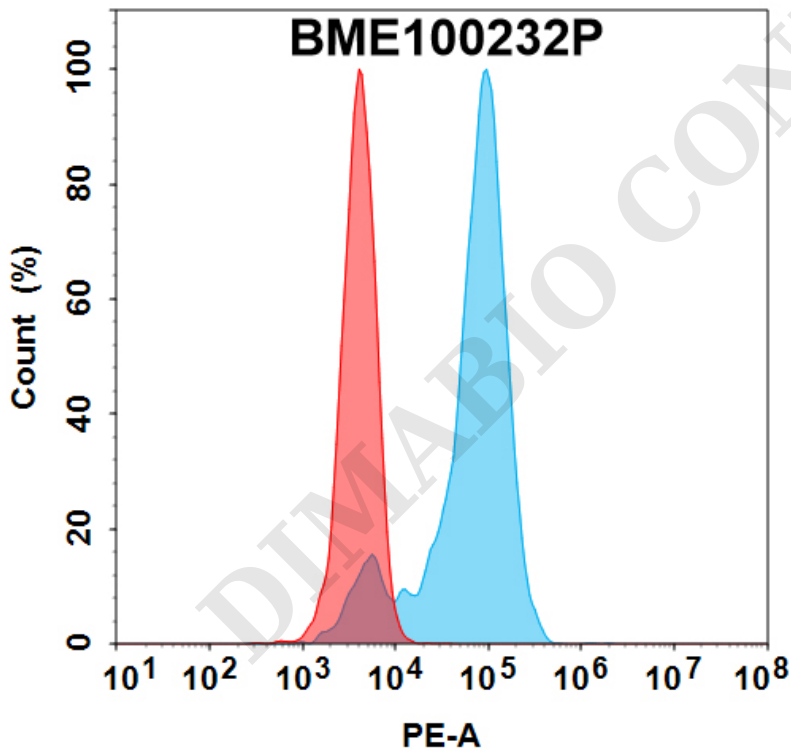


Figure 1. Flow cytometry analysis with 100 µl/test (1:350) PE-conjugated Anti-CDH6(raludotatug biosimilar) mAb (BME100232P) (Blue histogram) or isotype control mAb (Red histogram) on K562-CDH6 cells.

