

PRODUCT INFORMATION

Common Name	GC-182,IMAB-362,IMAB362,claudiximab
Synonyms	GC-182;MAB-362;MAB362;laudiximab
Applications	Flow Cyt
Recommended Dilutions	Flow Cyt 1:100
Formulation & Reconstitution	Liquid□PBS with 0.05% Proclin300, 1% BSA
Host Species	Chimeric
IgG type	IgG1
Reactivity	Human
Target	CLDN18.2
Uniprot ID	P56856
Description	PE-conjugated Anti-CLDN18.2 (zolbetuximab biosimilar) mAb
Delivery	3-4 weeks
Storage & Shipping	Store at 2°C-8°C for 6 months
Background	Research grade biosimilar. Not for use in therapeutic or diagnostic procedures for humans or animals.
Usage	Research use only
Conjugate	PE-conjugated
DIMA Disclaimer	All DIMA recombinant antibodies are genuinely generated by DIMA Biotech. They are all under patent application. Any protein sequencing or reverse engineering attempt is prohibited. We are actively scrutinizing all patent application to ensure no IP infringement.



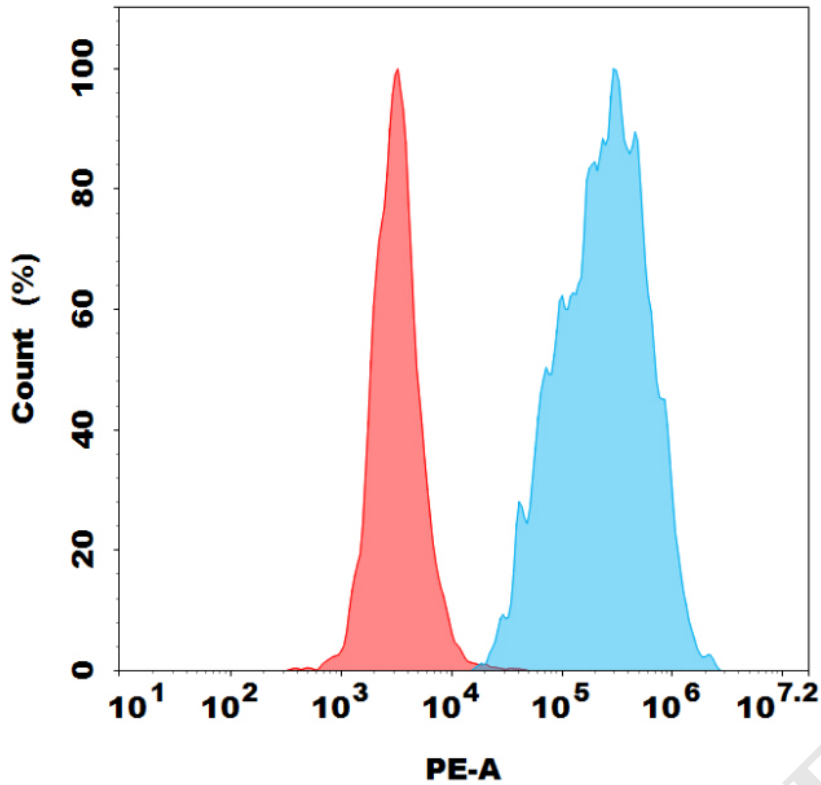


Figure 1. Flow cytometry analysis with 0.5ul/test Anti-CLDN18.2 (zolbetuximab biosimilar) on AGS-CLDN18.2 stable expression cell line (Blue histogram) or 293T (Red histogram).

