

PRODUCT INFORMATION

Clone ID	DMC368
Target	GPR75
Synonyms	Probable G-protein coupled receptor 75
Host Species	Rabbit
Description	PE-conjugated Anti-GPR75 antibody(DMC368); IgG1 Chimeric mAb
Delivery	3-4 weeks
Uniprot ID	O95800
IgG type	Rabbit/Human Fc chimeric IgG1
Clonality	Monoclonal
Reactivity	Human
Applications	Flow Cyt
Recommended Dilutions	Flow Cyt 1:100
Purification	Purified from cell culture supernatant by affinity chromatography
Formulation & Reconstitution	Liquid□PBS with 0.05% Proclin300, 1% BSA
Storage & Shipping	Store at 2°C-8°C for 6 months
Background	GPR75 is a member of the G protein-coupled receptor family. GPRs are cell surface receptors that activate guanine-nucleotide binding proteins upon the binding of a ligand.
Usage	Research use only
Conjugate	PE-conjugated
DIMA Disclaimer	All DIMA recombinant antibodies are genuinely generated by DIMA Biotech. They are all under patent application. Any protein sequencing or reverse engineering attempt is prohibited. We are actively scrutinizing all patent application to ensure no IP infringement.



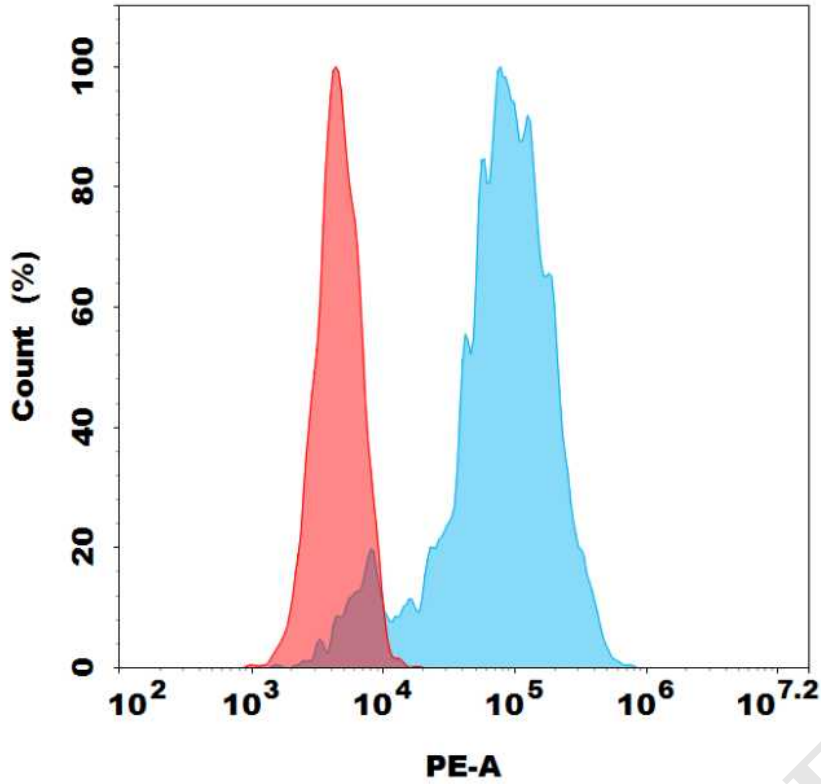


Figure 1. Flow cytometry analysis with 0.5 μ l/test PE Anti-GPR75 antibody(DMC368) on CHO-GPR75 stable expression cell line (Blue histogram) or CHO (Red histogram).

DIMABIO CONFIDENTIAL

