

PRODUCT INFORMATION

| | |
|---|--|
| Common Name | Warning: Undefined variable \$hasAttributeValueDescription in C:\wwwroot\mirror.dimabio.com\wp-content\plugins\woocommerce-print-products\publicclass-woocommerce-print-products-public.php on line 2806 5f9_MLN2045 |
| Conjugate | PE-conjugated |
| Synonyms | DIAR6;GC-C;GUC2C;MECIL;MUCIL;STAR |
| Applications | Flow Cyt |
| Recommended Dilutions | Flow Cyt 1µl/test |
| Formulation & Reconstitution | Liquid,PBS with,0.18%BSA,0.1%Proclin300 |
| Host Species | Homo sapiens |
| IgG type | IgG1 |
| Reactivity | Human |
| Target | GUCY2C |
| Uniprot ID | P25092 |
| Description | PE-conjugated Anti-GUCY2C(indusatumab biosimilar) mAb |
| Delivery | In Stock |
| Yefei_Storage | Store at 2°C-8°C for 6 months |
| Background | Research grade biosimilar. Not for use in therapeutic or diagnostic procedures for humans or animals. |
| Usage | Research use only |

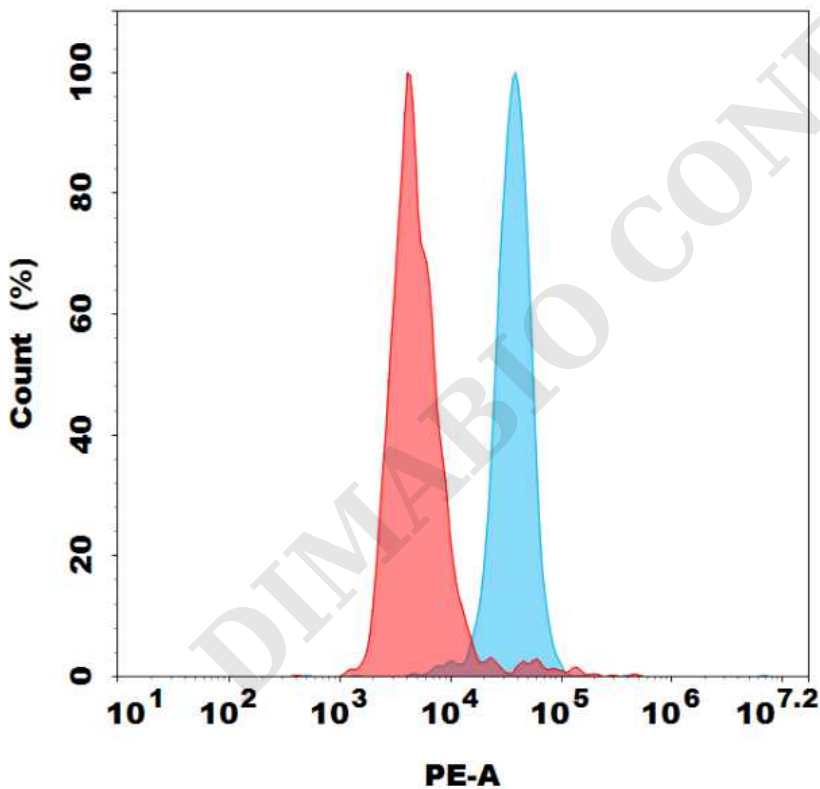


Figure 1. Flow cytometry analysis with 1 µl/test PE-conjugated Anti-GUCY2C(indusatumab biosimilar) mAb on HT55 cells (Blue histogram) or CHO-S cells (Red histogram).

