

### PRODUCT INFORMATION

<b>Common Name</b>	<b>Warning:</b> Undefined variable \$hasAttributeValueDescription in C:\wwwroot\mirror.dimabio.com\wp-content\plugins\woocommerce-print-products\publicclass-woocommerce-print-products-public.php on line 2806 ANTI-LY6E[DLYE-5953A][DLYE5953A]RG 7841
<b>Conjugate</b>	PE-conjugated
<b>Synonyms</b>	RIGE; SCA2; RIG-E; SCA-2; TSA-1
<b>Applications</b>	Flow Cyt
<b>Recommended Dilutions</b>	Flow Cyt 1µl/test
<b>Formulation &amp; Reconstitution</b>	Liquid,PBS with,0.18%BSA[0.1%Proclin300
<b>Host Species</b>	Humanized
<b>IgG type</b>	IgG1
<b>Reactivity</b>	Human
<b>Target</b>	LY6E
<b>Uniprot ID</b>	Q16553
<b>Description</b>	PE-conjugated Anti-LY6E(RG7841 biosimilar) mAb
<b>Delivery</b>	In Stock
<b>Storage &amp; Shipping</b>	Store at 2°C-8°C for 6 months
<b>Background</b>	Research grade biosimilar. Not for use in therapeutic or diagnostic procedures for humans or animals.
<b>Usage</b>	Research use only

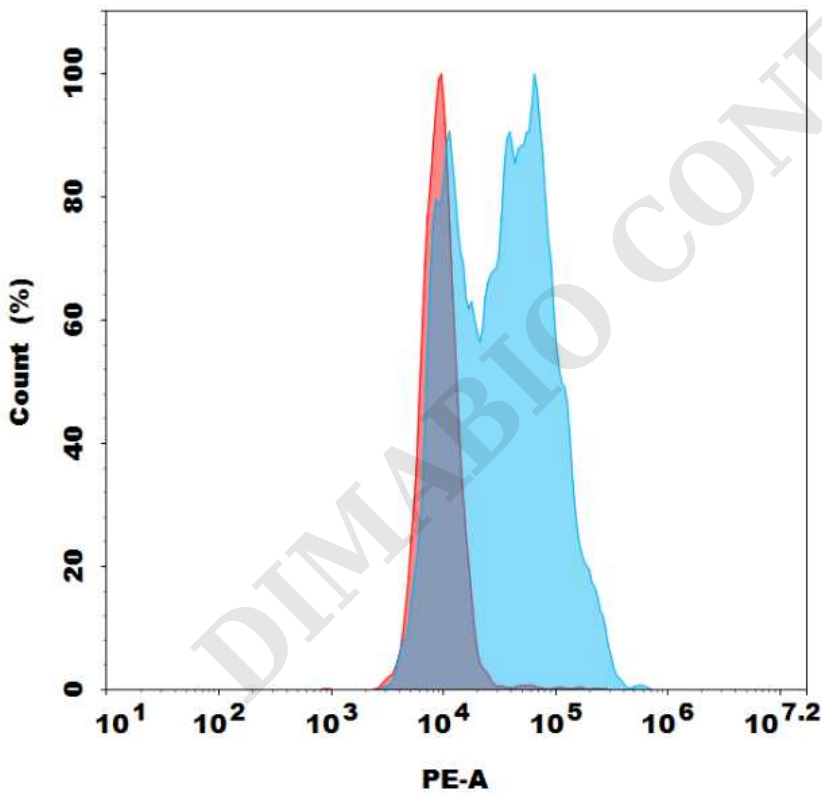


Figure 1. Flow cytometry analysis with 0.1µl/test PE-conjugated Anti-LY6E(RG7841 biosimilar) mAb on Expi293 cells transfected with Human LY6E protein (Blue histogram) or Expi293 transfected with irrelevant protein (Red histogram).

