

PRODUCT INFORMATION

Clone ID	Warning: Undefined variable \$hasAttributeValueDescription in C:\wwwroot\mirror.dimabio.com\wp-content\plugins\woocommerce-print-products\publicclass-woocommerce-print-products-public.php on line 2806 15F4
Target	SEZ6
Synonyms	BSRPC
Host Species	Rabbit
Description	PE-Anti-SEZ6 antibody(15F4), IgG1 Chimeric mAb
Delivery	In Stock
Uniprot ID	Q53EL9
IgG type	Rabbit/Human Fc chimeric IgG1
Clonality	Monoclonal
Reactivity	Human
Applications	Flow Cyt
Recommended Dilutions	Flow Cyt 1µl/test
Purification	Purified from cell culture supernatant by affinity chromatography
Formulation & Reconstitution	Liquid, PBS with 0.18%BSA[0.1%Proclin300
Yefei_Storage	Store at 2°C-8°C for 6 months.
Background	The protein encoded by this gene is thought to contain five cysteine-rich motifs that are similar to sushi domains, as well as two domains similar to the amino terminal half of the CUB (for complement C1r/C1s, Uegf, Bmp1) domain. Mutations in this gene have been associated with febrile seizures. [provided by RefSeq, Jul 2016]
Usage	Research use only
Conjugate	PE-conjugated

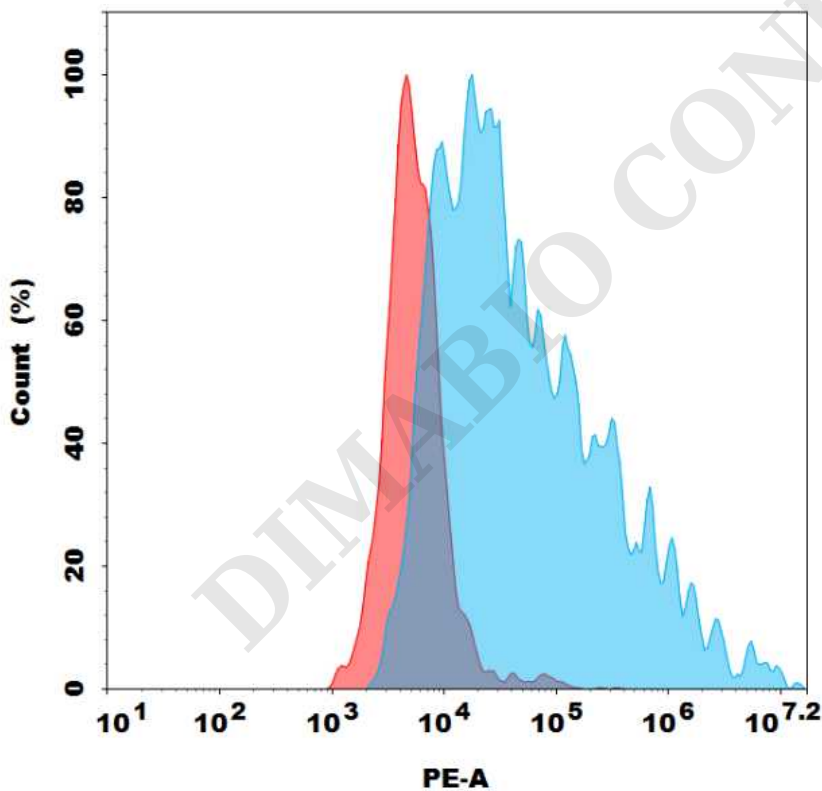


Figure 1. Flow cytometry analysis with 1µl/test PE-Anti-SEZ6 antibody(15F4) mAb on Expi293 cells transfected with Human SEZ6 protein (Blue histogram) or Expi293 transfected with irrelevant protein (Red histogram).

