

PRODUCT INFORMATION

Clone ID	Warning: Undefined variable \$hasAttributeValueDescription in C:\wwwroot\mirror.dimabio.com\wp-content\plugins\woocommerce-print-products\publicclass-woocommerce-print-products-public.php on line 2806 DMC223
Target	TREM2
Synonyms	PLOSL2; TREM-2; Trem2a; Trem2b; Trem2c
Host Species	Rabbit
Description	PE-conjugated Anti-TREM2 antibody(DMC223); IgG1 Chimeric mAb
Delivery	In Stock
Uniprot ID	Q9NZC2
IgG type	Rabbit/Human Fc chimeric IgG1
Clonality	Monoclonal
Reactivity	Human
Applications	Flow Cyt
Recommended Dilutions	Flow Cyt 1:200
Purification	Purified from cell culture supernatant by affinity chromatography
Formulation & Reconstitution	Liquid PBS with 0.05% Proclin300, 1% BSA
Yefei_Storage	Store at 2°C-8°C for 6 months
Background	This gene encodes a membrane protein that forms a receptor signaling complex with the TYRO protein tyrosine kinase binding protein. The encoded protein functions in immune response and may be involved in chronic inflammation by triggering the production of constitutive inflammatory cytokines. Defects in this gene are a cause of polycystic lipomembranous osteodysplasia with sclerosing leukoencephalopathy (PLOS1). Alternative splicing results in multiple transcript variants encoding different isoforms.
Usage	Research use only
Conjugate	PE-conjugated
DIMA Disclaimer	All DIMA recombinant antibodies are genuinely generated by DIMA Biotech. They are all under patent application. Any protein sequencing or reverse engineering attempt is prohibited. We are actively scrutinizing all patent application to ensure no IP infringement.

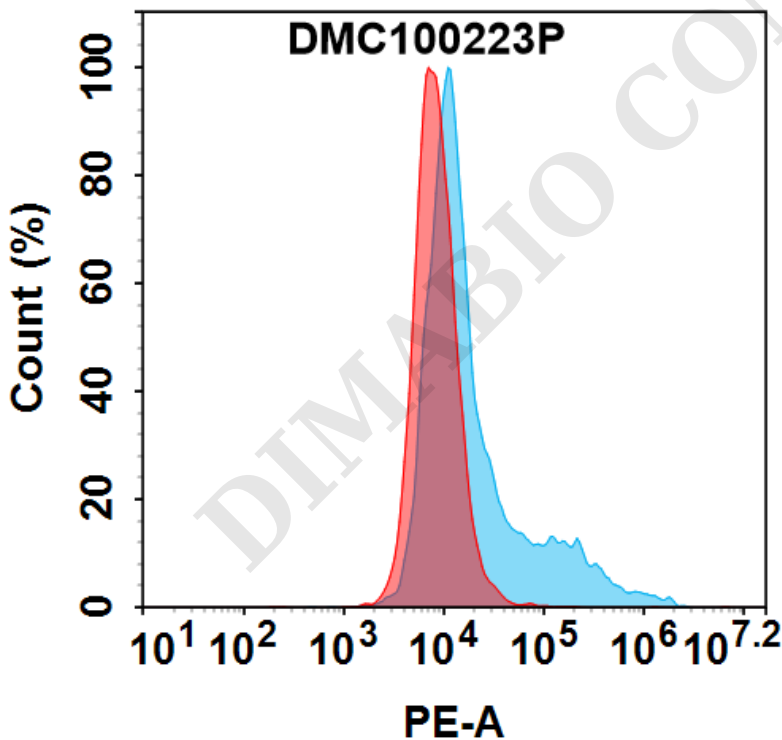


Figure 1. Flow cytometry analysis with 100 μ l/test (1:200) PE-conjugated Anti-TREM2 antibody(DMC223); IgG1 Chimeric mAb (DMC100223P) on HEK293 cells transfected with Human TREM2 protein and Human DAP12 protein (Blue histogram) or HEK293 transfected with DAP12 protein (Red histogram).

